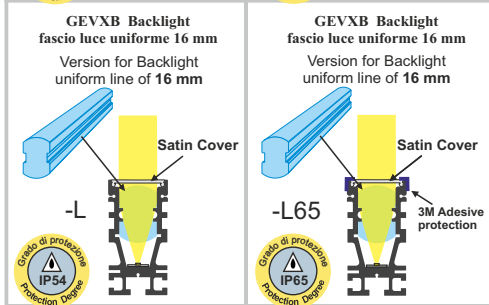
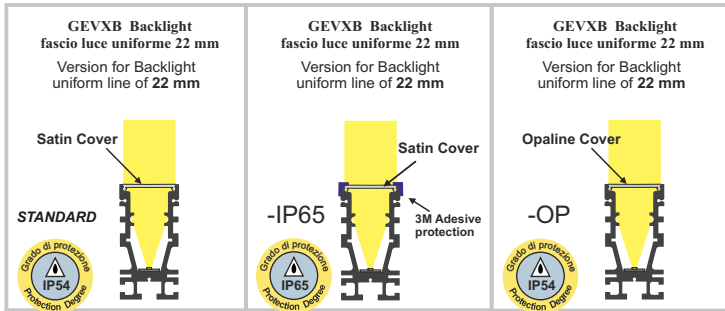
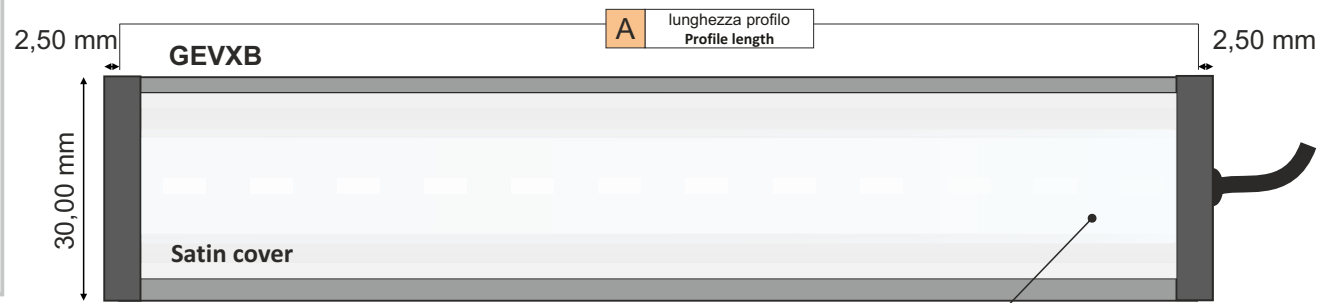


GEVXB Lamps

GEVXB Configuration examples	Length	Colour	Continue or impulsive use	Standard supply current	Power consumption	Lumen / W emission	Typical Lighting cd/m ²	Typical Lighting W/m ²	Working temperature range
GEVXB12-6K-UD-70	12 cm	6000K White	Continue use passive cooler	350 mA	8,4 W	1260 lumen	77K cd/m ²	290 W/m ²	Da 0° (no frost) a +40°C From 0° to +40°C Per uso continuo di più canali è necessario un radiatore aggiuntivo For continuous use of several channels it is necessary an additional radiator
GEVXB24-6K-UD-70	24 cm	6000K White	Continue use passive cooler	700 mA	16,8 W	2500 lumen	77K cd/m ²	290 W/m ²	
GEVXB24-6K-UD-70-L	24 cm	6000K White	Continue use passive cooler	700 mA	16,8 W	2500 lumen	168K cd/m ²	870 W/m ²	
GEVXB236-6K-HD-85	236 cm	6000K White	Continue use passive cooler	4,1 A	98 W	15000 lumen	40K cd/m ²	136 W/m ²	
GEVXB28-R625-250	28 cm	Red 625nm	Continue use passive cooler	750 mA	18 W	1800 lumen	35K cd/m ²	160 W/m ²	
GEVXB10-UV365-160	10 cm	UV 365	Continue use passive cooler	320 mA	7,7 W	3,5 W	-	500 W/m ²	



Su richiesta disegni meccanici 3D
3D mechanical drawings on request

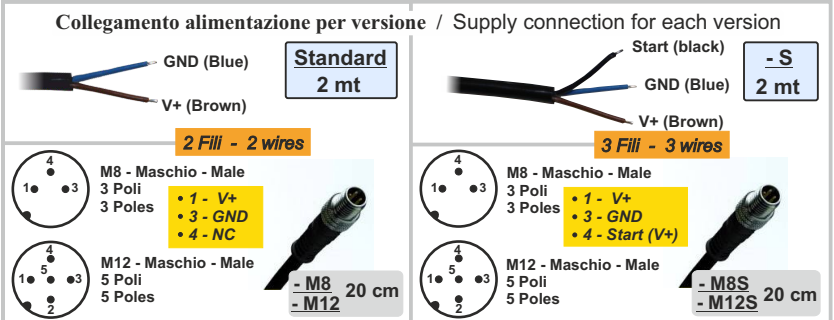
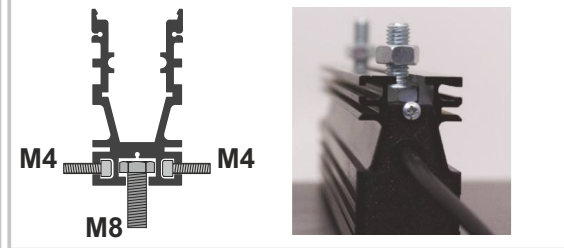
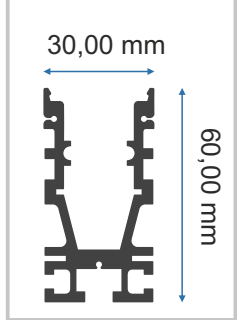


Si garantisce il grado IP segnalato se il prodotto viene montato rivolto verso il basso
The indicated IP protection degree is guaranteed only if the product is positioned downward

Grado di protezione IP54 Protection Degree

opzione con Lente convergente 5°
5° Convergence Lens option

Fissaggio standard vite M8 e M4 laterale
Standard fixing M8 screw and M4 in the side



Genesi LUX® a division of
Genesi Elettronica srl



GEVXB Options

Lampada Led / Led lamp

- Alimentazione: 24 Vdc
Supply: 24Vdc
- Grado di protezione: IP54
Protection degree: IP54
- Illuminatore sistemi ispezione con telecamere
illuminator for vision systems with cameras



Ex. Code : **GEVXBAAA-YY-CCC-WW1-WW2**

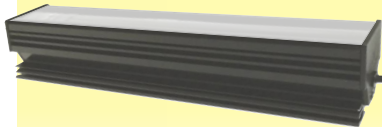
GEVXB Code			
Lunghezza lampada Lamp length	Colore Led Led Colour	Corrente per Led Current per Led	Varianti e opzioni Variants and options
AAA	YY	CCC	WW1- WW2

-WW1 Varianti coperture Lampada Cover Lamp variants	
STANDARD	Copertura Satinata Satin Cover
-OP	Copertura Opalina Opaline Cover
-L	Copertura Satinata + Lente focalizzante 5° Satin Cover + 5° focusing lens coverage
-IP65	Copertura Satinata + Adesivo 3M Satin Cover + Adesive 3M
-L65	Copertura Satinata + Lente focalizzante 5° + 3M Satin Cover + 5° focusing lens coverage + 3M

Lunghezza lampada Lamp length	
Min (cm)	4
Max (cm)	600
Passo 2 cm 2 cm Step	

Colori Colours	
-6K <i>STANDARD</i>	Bianco freddo 6000K 6000K Cold white
-4K	Bianco Naturale 4000K 4000K Natural white
-3K	Bianco Caldo 3000K 3000K Warm white
-YY	Custom IR / UV / COLOR

Corrente per Led Current per led	
UD-70	(GE411) 70mA per Led
HD-85	(GE340) 85mA per Led
-2A	2A per Led uso impulsivo 2A per Led impulsive use TON max 1/10
-CCC	custom



GEVXB42-6K-UD-70

-WW2 Collegamento alimentazione per versione Supply connection for each version	
STANDARD	Versione standard cavo 2 poli 2mt standard version with 2mt 2-poles cable
-M8	Versioni -M8 conn. M8 3 poli Maschio cavo 20cm -M8 versions M8 3-poles 20 cm male cable
-M12	Versioni -M12 conn. M12 5 poli Maschio cavo 20cm -M12 versions M12 5-poles 20 cm male cable
-S	Ver. -S (Start/Strobe) Max. current driving of 10mA, 3poles 2Mt Cable
-M8S	Ver. -M8S (Start/Strobe) Max. curr. driving of 10mA, M8 3poles 20cm Male Cable
-M12S	Ver. -M12S (Start/Strobe) Max. curr. driving of 10mA, M12 5poles 20cm Male Cable
-5M	cavo 2 poli 5mt / 5mt 2 poles cable
-5MS	cavo 3 poli 5mt / 5mt 3 poles cable
-WW	Versioni custom Custom versions

<p>GEVXB Backlight fascio luce uniforme 22 mm Version for Backlight uniform line of 22 mm</p> <p>STANDARD</p> <p>Grado di protezione IP54 Protection Degree</p>	<p>GEVXB Backlight fascio luce uniforme 22 mm Version for Backlight uniform line of 22 mm</p> <p>-OP</p> <p>Grado di protezione IP54 Protection Degree</p>	<p>GEVXB Backlight fascio luce uniforme 16 mm Version for Backlight uniform line of 16 mm</p> <p>-L</p> <p>Grado di protezione IP54 Protection Degree</p>	<p>GEVXB Backlight fascio luce uniforme 22 mm Version for Backlight uniform line of 22 mm</p> <p>-IP65</p> <p>Grado di protezione IP65 Protection Degree</p>	<p>GEVXB Backlight fascio luce uniforme 16 mm Version for Backlight uniform line of 16 mm</p> <p>-L65</p> <p>Grado di protezione IP65 Protection Degree</p>
--	---	--	---	--

NORMATIVE / STANDARDS

Immunità elettromagnetica - EMC immunity :	EN 61547:2009	
Emissione elettromagnetica - EMC emission :	EN 55015:2013 + A1	
Rischio fotobiologico - Photobiologic risk :	EN 62471:2008 GLS: RISK EXEMPT	Only for white light, continuous use
Assessment of lighting equipment related to human exposure to electromagnetic fields	EN 62493:2015	

ATTENZIONE / WARNING

- Prodotto elettrico per uso professionale, può essere installato solo da personale qualificato.
Electrical device exclusively for professional use. Installation can be done by qualified personnel only.
- In caso di danneggiamento del cavo di alimentazione, la sostituzione del medesimo deve essere eseguita esclusivamente presso la casa madre.
In case of power supply wire damage, its replacement has to be done at the head office exclusively.
- Perdita di **GARANZIA** a causa di uso improprio e manomissione del prodotto.
Warranty loss in case of inappropriate use and tampering.



Genesi LUX® a division of

Genesi Elettronica srl

V. Bachelet, 3 - 41057 Spilamberto - MODENA -
Tel. 059785566 - info@genesi-lux.it - www.genesi-lux.it



Organization with a certified **ISO 9001:2015** Quality Management System