

  
GENESI  
**Genesis LUX®**

MULTISPECTRAL  
12 Programmable wavelengths

# GENESI ELETTRONICA

## WHO WE ARE OUR MISSION



Genesi Elettronica is an Italian company certified ISO 9001 with over 35 years of experience in the design and manufacturing of led lighting solutions and electronic boards.

Founded in 1991 by entrepreneurs Mauro Munari and Mario Rossi, the company was initially specialised in manufacturing customised electronic boards based on customer project.

In 2008, Genesi embarked on a new venture, establishing a dedicated facility to produce customised lighting solutions for a wide range of industries, including machine vision, pharmaceutical, automotive, packaging, food & beverage, labelling, sorting, tobacco and all areas of quality control.

At Genesi Elettronica, customer needs are at the forefront of everything we do.

This unwavering commitment to quality and innovation has propelled Genesi to the forefront of the customised lighting industry, establishing a strong presence in the international market.

### SMD ASSEMBLY



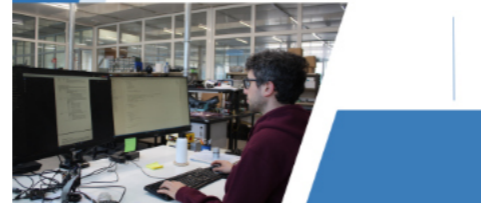
### ELECTRONIC BOARDS MANUFACTURING



### HARDWARE ENGINEERING TEAM



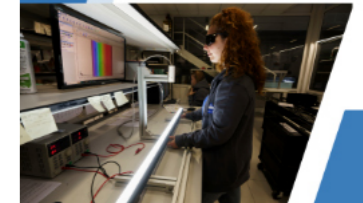
### SOFTWARE DEVELOPMENT TEAM



### LED ILLUMINATORS MANUFACTURING



### LED ILLUMINATORS TESTING AREA



### LED LIGHTING R&D



### SHOWROOM & TESTING ROOM



### SALES DEPARTMENT



### LOGISTICS



## SUMMARY

### Bar Lights

3-4 GEIL

5-6 GEILD

7-8 GEL

9-10 GEM

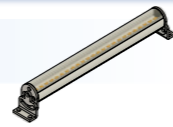
11-12 GEMB

13-14 GEMX4-X6

15-16 GEMPC

17-18 GEMHR

19-20 GEVA



### Power Bar Lights

21-22 GP - GENESI POWER BAR

**Blue Line\***

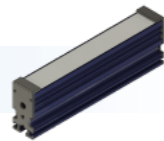
23-24 GX - GENESI XBAR

**Blue Line\***

25-26 GEVX

27-28 GEVXB

29-30 GEVXD



### Ring Lights

31-32 GEST

33-34 GEST MEGA-RING

**Blue Line\***



### Spot Lights

35-36 GES

37-38 GS - GENESI SPOT

**Blue Line\***



### Backlights

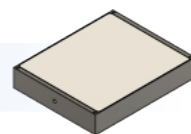
39-40 GERE

41-42 GH

43-44 GZ

45-46 GB - GENESI BACKLIGHT

**Blue Line\***



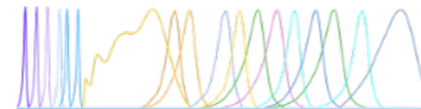
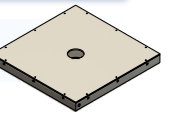
## SUMMARY

### Flat Dome Lights

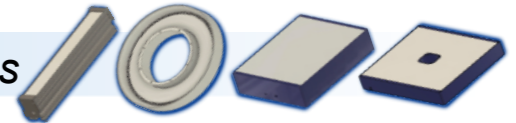
47-48 GERE

49-50 GF - GENESI FLAT DOME

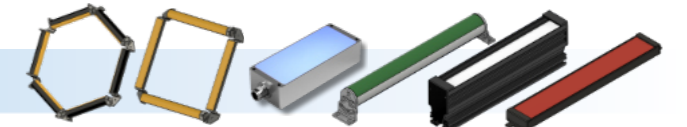
**Blue Line\***



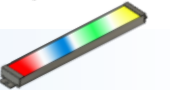
51-52 Multispectral Lighting - 12 Wavelengths



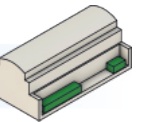
53-54 Five Colors Line



55-56 Industrial Metric LED Bar



57-58 Controllers



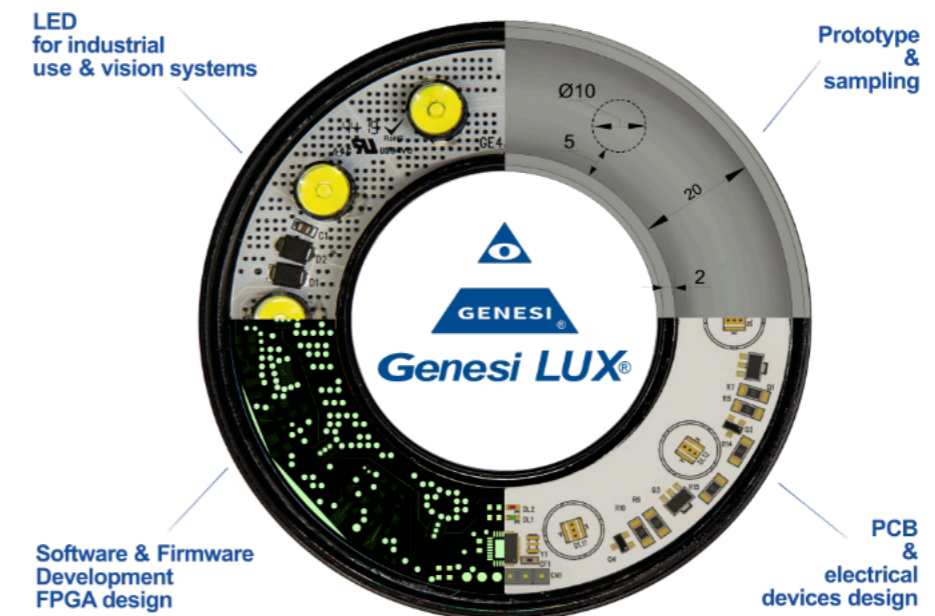
59-60 Cables

61-62 Design Process & Tailor-made applications

63-64 GVS - Genesi Virtual Simulator

65-66 Genesi Goes Green

**\*Blue Line** - Internal controller with 4 Driving Modes



# PRODUCT CONFIGURATION

It is possible to choose among several lengths, colours, powers, fixings, covers and cables.

## Example

Your Code: **GEVX42-6K-UD**



Ex. Code : **GEVXXX** -**YYY** -**CCC** -**WW1** -**WW2**

Your Code : **GEV42** - **6K** - **UD** -  -

XXX	Base Lengths	-YYY	Led Colours	-CCC	Powers	-WW1	Cover variants
GEVX06	6 cm	-6K	Base 6000K Cold White	UD	70 mA per led ULTRA DENSITY		Base 5° lens cover
GEVX10	10 cm	-4K	4000K Natural White	HD	85 mA per led HIGH DENSITY	-T65	Transparent cover - IP65
GEVX16	16 cm	-365	UV 365 nm	XD	300 mA per led POWER LED	-T67	Transparent cover - IP67 UP TO 1 METER
GEVX20	20 cm	-385	UV 385 nm	YD	2A per LED ONLY STROBE USE	-ML	12° ML 4°- 45° + transparent cover
GEVX28	28 cm	-395	UV 395 nm	-CCC	Current on demand	-L20	20° lens + transparent cover
GEVX34	34 cm	-405	UV 405 nm			-L40	40° lens + transparent cover
GEVX42	42 cm	-RGB	RGB			-TP	lens +Transparent cover + Polarizing filter
GEVX50	50 cm	-RGEYW	Five colors configurator at page 53			-TNP	Transparent cover without lens + Polarizing filter
GEVX60	60 cm	-450	450 nm Royal Blue			-TN	Transparent cover without lens + 3M - IP65
GEVX100	100 cm	-524	524 nm Green				
GEVX150	150 cm	-625	625 nm Red				
GEVX200	200 cm	-660	660 nm Deep Red				
GEVXXX	from 3 cm to 600 cm on demand	-730	730 nm IR				
		-850	850 nm IR				
		-950	950 nm IR				
		-1050	1050 nm SWIR				
		-1200	1200 nm SWIR				
		-1300	1300 nm SWIR				
		-1450	1450 nm SWIR				
		-1550	1550 nm SWIR				
		-YYY	Colour on demand				

Up to 2 different colours in a single light

Not all combinations are available

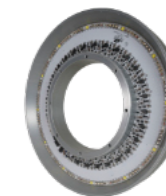
Cable extensions for M8 and M12: page 60

# 2026 NEW SOLUTIONS

Discover the latest innovations of Genesi Elettronica for a brighter 2026!

**Multispectral Lighting UV:** New UV table of our Multispectral lighting vision system with 12 programmable wavelengths from UV-C to UV-A, specifically from 255nm to 450 nm.

Discover the solution on page 51 - 52



**Five Colors Line:** New line of LED lighting solutions consisting of 5 families of illuminators featuring a high-intensity 5-colors LED board (RGBYW).

Discover the solution on page 53 - 54



**ABS606D:** Latest version of our LED Voltage controller with 6 channels for illuminators and 2 channels for cameras.

Discover the solution on page 57 - 58



## WHY CHOOSE GENESI ELETTRONICA



Create the perfect solution for your project with our technicians.



Test the product by requesting a sample or a kit with custom lights on demand.



Download the technical specifications for more details.



Email us to request the price list.



Ex. Code : **GEILXXX** -**YYY** -**CCC** -**WW1** -**WW2** -**WW3**

XXX	Base Lengths	-YYY	Led Colours	-CCC	Powers	-WW1	Cover variants
GEIL03	3 cm	-6K	Base 6000K Cold White		Base 85 mA per led	-T	Base Transparent cover
GEIL05	5 cm	-4K	4000K Natural White		10 mA per led	-OP	Base Opaline cover
GEIL10	10 cm	-365	UV 365 nm		20 mA per led	-ST	Satin cover
GEIL20	20 cm	-385	UV 385 nm		40 mA per led	-OPB	Semi-opaline black cover
GEIL28	28 cm	-395	UV 395 nm		120 mA per led	-TP	Polarizing filter + Transparent cover
GEIL34	34 cm	-405	UV 405 nm		Semi-continuous use	-OPP	Polarizing filter + Opaline cover
GEIL42	42 cm	-RGB	RGB		300 mA per led only strobe use	-WW1	Cover on demand
GEIL50	50 cm	-450	450 nm Royal Blue		-RA10	Analog reg 0-10V	
GEIL100	100 cm	-524	524 nm Green		-RA24	Analog reg 0-24V	
GEIL200	200 cm	-625	625 nm Red		-CC	Current Control	
GEILXXX	from 3 cm to 600 cm on demand	-660	660 nm Deep Red		-CCC	Current on demand	
		-730	730 nm IR				
		-850	850 nm IR				
		-950	950 nm IR				
		-1050	1050 nm SWIR				
		-1200	1200 nm SWIR				
		-1300	1300 nm SWIR				
		-1450	1450 nm SWIR				
		-1550	1550 nm SWIR				
		-YYY	Colour on demand				

-WW2	Fixing variants
	Base fixing
-FC	Short fixing
-FS	Rear fixing

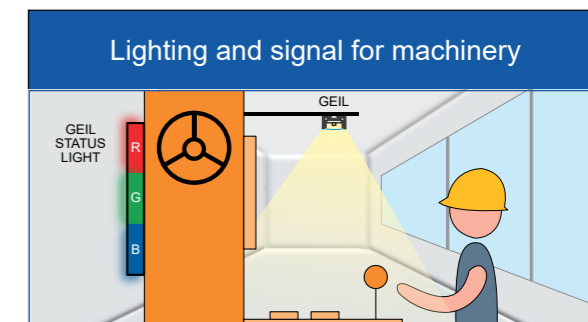
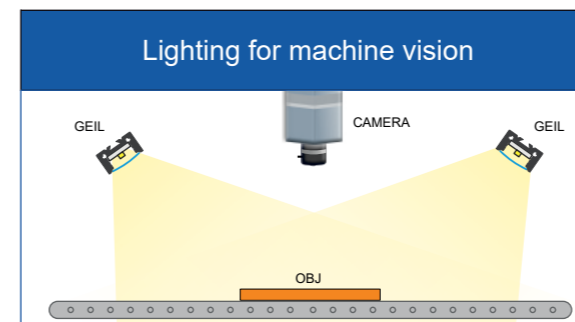
  

-WW3	Cables
	Base 2 Mt cable 2 wires
-M8	20 cm cable + M8 3P M
-M12	20 cm cable + M12 5P M
-S	2 Mt cable + logic start
-M8S	20 cm cable + M8 3P M + logic start
-M12S	20 cm cable + M12 5P M + logic start
-5M	5 Mt 2P cable
-5MS	5 Mt 3P cable + logic start
-WW3	Supply connection on demand

Cable extensions for M8 and M12: page 60

Not all combinations are available

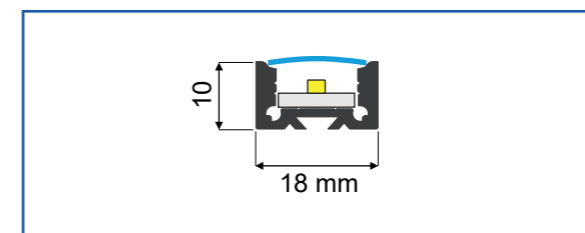
## TYPICAL APPLICATIONS



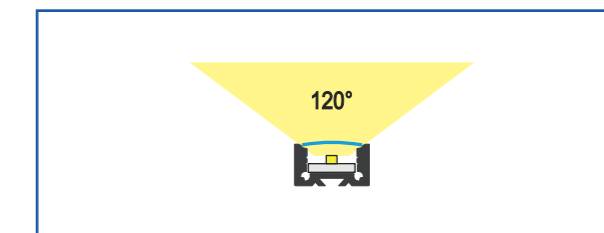
## MODELS EXAMPLES

	Code	Description	Price
Base model	GEIL20-6K-OP	Bar light 20 cm White 6000K Opaline cover 600Lm 170mA 4,0W 2Mt cable 2 Wires	65 €
Example	GEIL43-625-T-M8	Bar light 43cm Red 625nm Transparent cover GE442A-625-40 425mA 10W 20cm cable M8 3P M	149 €
Example	GEIL100-RGB-OP-M12	Bar light 100cm RGB Opaline cover GE440-20mA 1,440 A 34W 20cm cable M12 5 P M	430 €

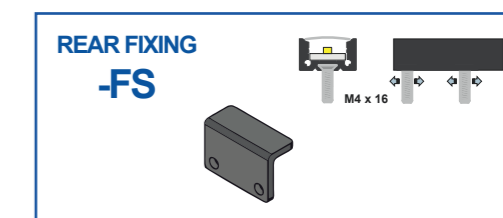
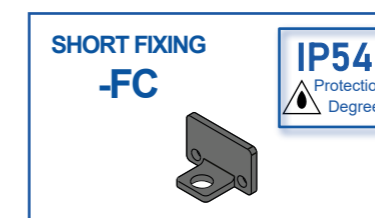
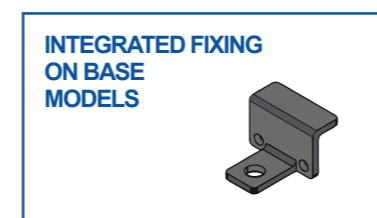
## MECHANICAL DRAWING



## BEAM ANGLE



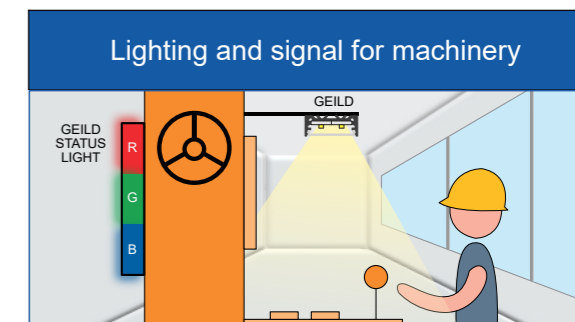
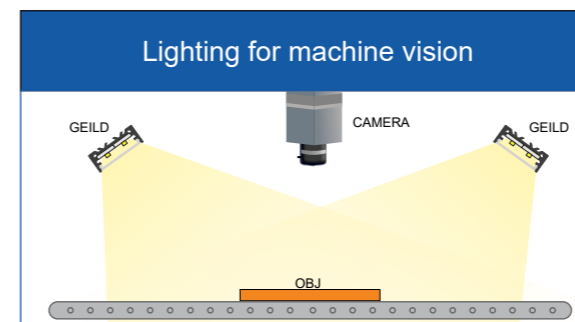
## FIXING



# GEILD



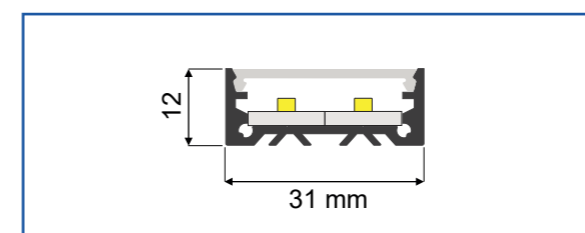
## TYPICAL APPLICATIONS



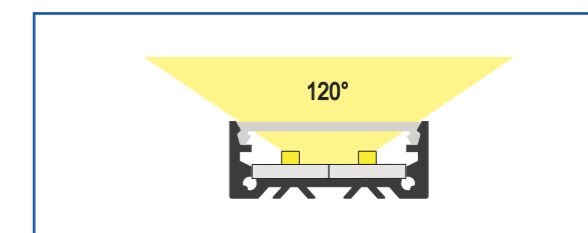
## MODELS EXAMPLES

	Code	Description	Price
Base model	GEILD20-6K-OP	Bar light 20cm White 6000K Opaline cover 1200Lm 340mA 8W 2Mt cable 2 Wires	112 €
Example	GEILD50-850-T-M12S	Bar light 50cm IR 850nm Transparent cover 840mA 20W 20cm cable M12 5P M + logic start	270 €
Example	GEILD100-6K-ST-M8S	Bar light 100cm White 6000K Satin PMMA cover 7200Lm 2000mA 48W 20cm cable M8 3P M + logic start	382 €

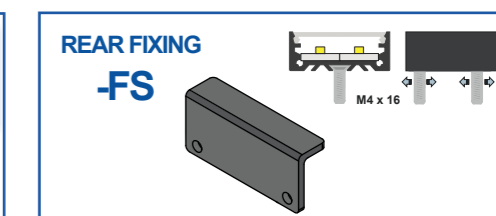
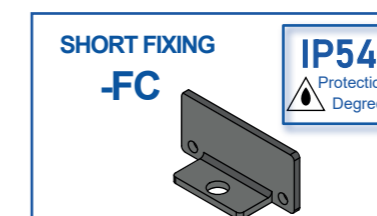
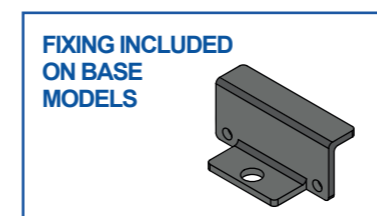
## MECHANICAL DRAWING



## BEAM ANGLE



## FIXING



Ex. Code : **GEILDXXX-YYY-CCC-WW1-WW2-WW3**

XXX	Base Lengths	-YYY	Led Colours	-CCC	Powers	-WW1	Cover variants
GEILD03	3 cm	-6K	Base 6000K Cold White		Base 85 mA per led	-T	Base Transparent cover
GEILD05	5 cm	-4K	4000K Natural White	-10	10 mA per led	-OP	Base Opaline cover
GEILD10	10 cm	-365	UV 365 nm	-20	20 mA per led	-ST	Satin cover
GEILD20	20 cm	-385	UV 385 nm	-40	40 mA per led	-OPB	Semi-opaline black cover
GEILD28	28 cm	-395	UV 395 nm	-120	120 mA per led Semi-continuous use	-TP	Polarizing filter + Transparent cover
GEILD34	34 cm	-405	UV 405 nm	-300	300 mA per led only strobe use	-OPP	Polarizing filter + Opaline cover
GEILD42	42 cm	-RGB	RGB	-RA10	Analog reg 0-10V	-WW1	Cover on demand
GEILD50	50 cm	-RGEYW	Five colors configurator at page 53	-RA24	Analog reg 0-24V	-WW2	Fixing variants
GEILD100	100 cm	-450	450 nm Royal Blue	-CC	Current Control	-FC	Base fixing
GEILD200	200 cm	-524	524 nm Green	-CCC	Current on demand	-FS	Short fixing
GEILDXXX	from 3 cm to 600 cm on demand	-625	625 nm Red				Rear fixing
		-660	660 nm Deep Red				
		-730	730 nm IR				
		-850	850 nm IR				
		-950	950 nm IR				
		-1050	1050 nm SWIR				
		-1200	1200 nm SWIR				
		-1300	1300 nm SWIR				
		-1450	1450 nm SWIR				
		-1550	1550 nm SWIR				
		-YYY	Colour on demand				

Up to 2 different colours in a single light

Cable extensions for M8 and M12: page 60

Not all combinations are available

# GEL



Ex. Code : **GELXXX** -**YYY** -**CCC** -**WW1** -**WW2** -**WW3**

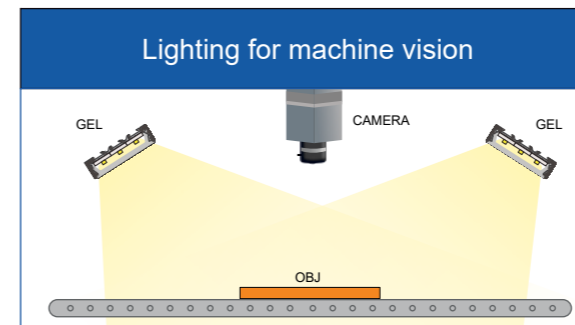
XXX	Base Lengths	-YYY	Led Colours	-CCC	Powers	-WW1	Cover variants
GEL05	5 cm	-6K	Base 6000K Cold White		Base 85 mA per led up to 25 cm	-T	Base Transparent cover
GEL09	9 cm	-4K	4000K Natural White		Base 70 mA per led up to 50 cm	-OP	Base Opaline cover
GEL18	18 cm	-365	UV 365 nm		Base 55 mA per led up to 200 cm	-ST	Satin cover
GEL25	25 cm	-385	UV 385 nm	-10	10 mA per led	-TP	Polarizing filter + Transparent cover
GEL34	34 cm	-395	UV 395 nm	-20	20 mA per led	-OPP	Polarizing filter + Opaline cover
GEL42	42 cm	-405	UV 405 nm	-40	40 mA per led	-WW1	Cover on demand
GEL50	50 cm	-RGB	RGB	-120	120 mA per led Semi-continuous use	-WW2	Fixing variants
GEL100	100 cm	-450	450 nm Royal Blue	-300	300 mA per led only strobe use		Base fixing
GEL200	200 cm	-524	524 nm Green	-RA10	Analog reg 0-10V	-FC	Short fixing
GELXXX	from 3 cm to 600 cm on demand	-625	625 nm Red	-RA24	Analog reg 0-24V	-FS	Rear fixing
		-660	660 nm Deep Red	-CC	Current Control	-WW3	Cables
		-730	730 nm IR	-CCC	Current on demand		Base 2 Mt cable 2 wires
		-850	850 nm IR				-M8 20 cm cable + M8 3P M
		-950	950 nm IR				-M12 20 cm cable + M12 5P M
		-1050	1050 nm SWIR				-S 2 Mt cable + logic start
		-1200	1200 nm SWIR				-M8S 20 cm cable + M8 3P M + logic start
		-1300	1300 nm SWIR				-M12S 20 cm cable + M12 5P M + logic start
		-1450	1450 nm SWIR				-5M 5 Mt 2P cable
		-1550	1550 nm SWIR				-5MS 5 Mt 3P cable + logic start
		-YYY	Colour on demand				-WW3 Supply connection on demand

Up to 3 different colours in a single light

Cable extensions for M8 and M12: page 60

Not all combinations are available

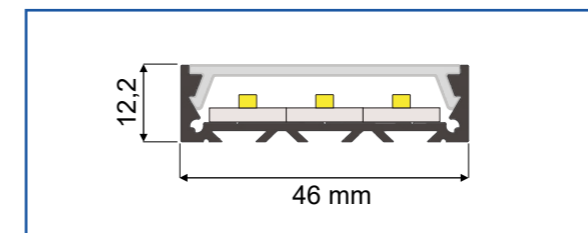
## TYPICAL APPLICATIONS



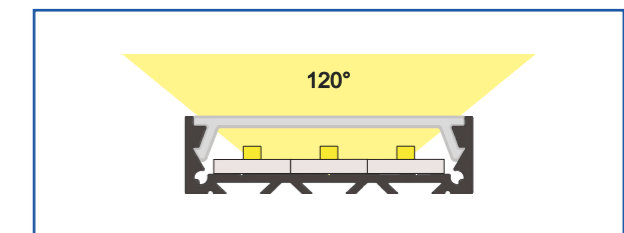
## MODELS EXAMPLES

	Code	Description	Price
Base model	GEL25-6K-OP	Bar light 25cm White 6000K Opaline cover 2700Lm 765mA 18W 2 Mt cable 2 Wires	168 €
Example	GEL34-850-70-T-M8S	Bar light 34cm IR 850nm Transparent cover 840mA 20W 20cm cable M8 3P M+ logic start	246 €
Example	GEL200-470-OP	Bar light 200cm Blue 470nm Opaline cover GE442 4,25A 102W 2Mt cable	1.076 €

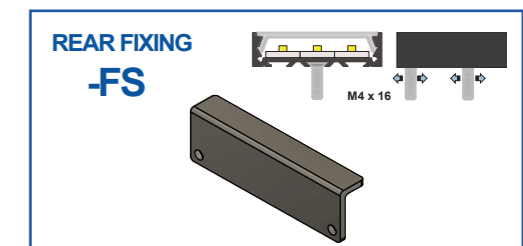
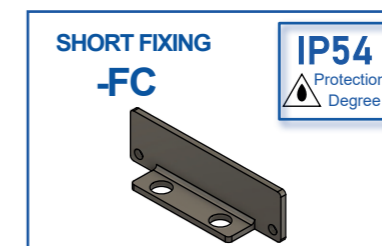
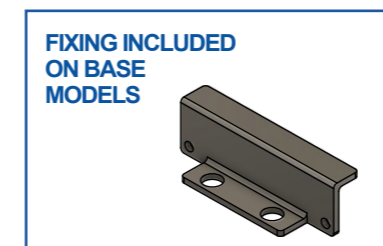
## MECHANICAL DRAWING



## BEAM ANGLE



## FIXING



# GEM



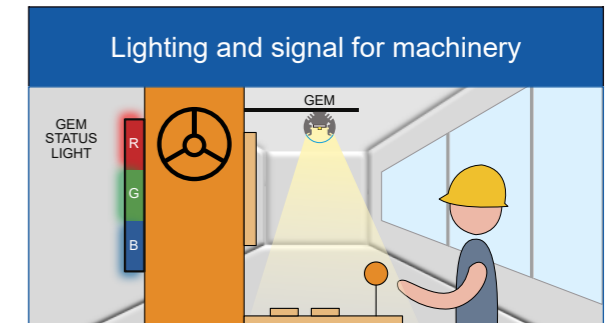
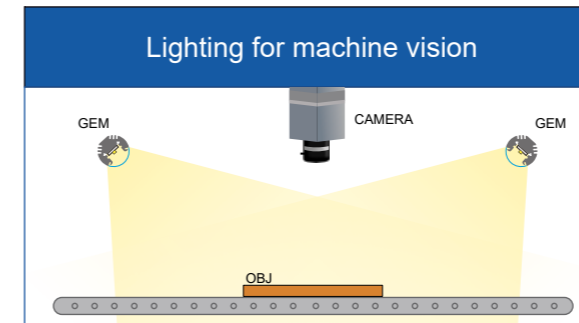
Ex. Code : **GEMXXX-YYY-CCC-WW1-WW3**

XXX	Base Lengths	-YYY	Led Colours	-CCC	Powers	-WW1	Cover variants
GEM03	3 cm	-6K	Base 6000K Cold White		Base 120 mA per led up to 200	-T	Base Transparent cover
GEM05	5 cm	-4K	4000K Natural White	-20	20 mA per led	-OP	Base Opaline cover
GEM09	9 cm	-365	UV 365 nm	-40	40 mA per led	-L10	10° lens
GEM18	18 cm	-385	UV 385 nm	-70	70 mA per led	-L20	20° lens + transparent cover
GEM25	25 cm	-395	UV 395 nm	-85	85 mA per led	-L25	25° lens
GEM34	34 cm	-405	UV 405 nm	-300	300 mA per led only strobe use	-L40	40° lens + transparent cover
GEM42	42 cm	-RGB	RGB	-RA10	Analog reg 0-10V	-L60	60° lens + transparent cover
GEM50	50 cm	-RGEYW	Five colors configurator at page 53	-RA24	Analog reg 0-24V	-TP	Polarizing filter + Transparent cover
GEM100	100 cm	-450	450 nm Royal Blue	-CC	Current Control	-WW1	Cover on demand
GEM200	200 cm	-524	524 nm Green	-CCC	Current on demand		
GEMXXX	from 3 cm to 600 cm on demand	-6KR	Bicolour 6K + Red			-WW3	Cables
		-6KB	Bicolour 6K + Blue				Base 2 Mt cable 2 wires
		-6KG	Bicolour 6K + Green			-M8	20 cm cable + M8 3P M
		-625	625 nm Red			-M12	20 cm cable + M12 5P M
		-660	660 nm Deep Red			-S	2 Mt cable + logic start
		-730	730 nm IR			-M8S	20 cm cable + M8 3P M + logic start
		-850	850 nm IR			-M12S	20 cm cable + M12 5P M + logic start
		-950	950 nm IR			-5M	5 Mt 2P cable
		-1050	1050 nm SWIR			-5MS	5 Mt 3P cable + logic start
		-1200	1200 nm SWIR			-WW3	Supply connection on demand
		-1300	1300 nm SWIR				
		-1450	1450 nm SWIR				
		-1550	1550 nm SWIR				
		-YYY	Colour on demand				

Cable extensions for M8 and M12: page 60

Not all combinations are available

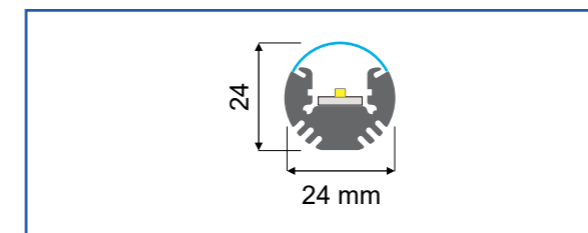
## TYPICAL APPLICATIONS



## MODELS EXAMPLES

	Code	Description	Price
Base model	GEM25-6K-OP	Bar light 25cm White 6000K Opaline cover 1230Lm 340mA 8,2W 2 Mt cable 2 Wires	74 €
Example	GEM25-625-L10	Bar light 25cm RED 625nm 10° Lens cover 340mA 8,6W 2Mt cable 2 Wires	133 €
Example	GEM230-6KB-OP-M12	Bar light 230cm White 6000K + Blue 470nm opaline cover 3,23A 20cm M12 5P M	564 €

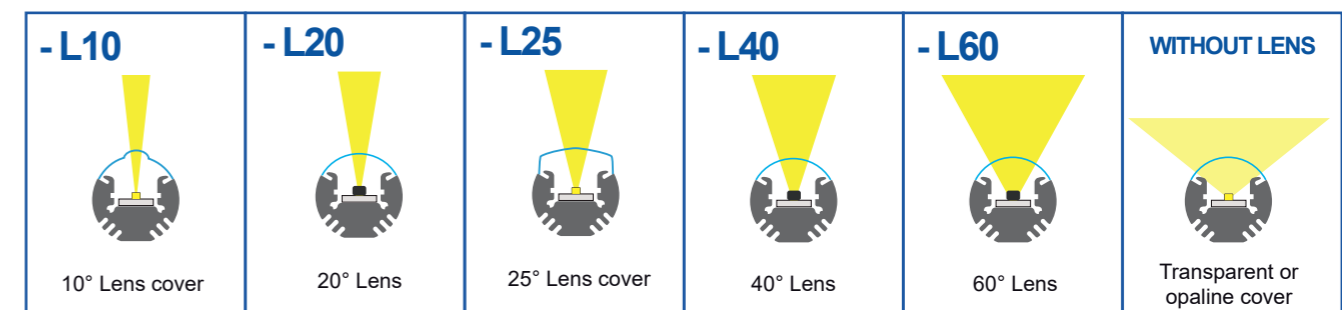
## MECHANICAL DRAWING



## FIXING



## BEAM ANGLES



# GEMB



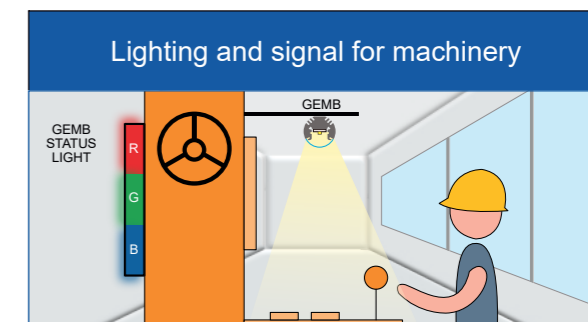
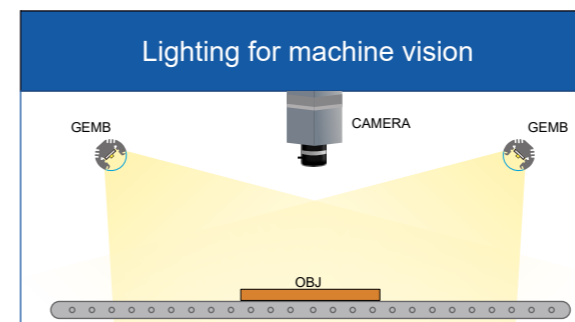
Ex. Code : **GEMBXXX**-YYY-CCC-**WW1**-**WW3**

XXX	Base Lengths	YYY	Led Colours	CCC	Powers	WW1	Cover variants	WW3	Cables
GEMB03	3 cm	-6K	Base 6000K Cold White		Base 120 mA per led up to 200	-T	Base Transparent cover		Base 2 Mt cable 2 wires
GEMB05	5 cm	-4K	4000K Natural White	-20	20 mA per led	-OP	Base Opaline cover	-M8	20 cm cable + M8 3P M
GEMB09	9 cm	-365	UV 365 nm	-40	40 mA per led	-L10	10° lens	-M12	20 cm cable + M12 5P M
GEMB18	18 cm	-385	UV 385 nm	-70	70 mA per led	-L20	20° lens + transparent cover	-S	2 Mt cable + logic start
GEMB25	25 cm	-395	UV 395 nm	-85	85 mA per led	-L25	25° lens	-M8S	20 cm cable + M8 3P M + logic start
GEMB34	34 cm	-405	UV 405 nm	-300	300 mA per led only strobe use	-L40	40° lens + transparent cover	-M12S	20 cm cable + M12 5P M + logic start
GEMB42	42 cm	-RGB	RGB	-RA10	Analog reg 0-10V	-L60	60° lens + transparent cover	-5M	5 Mt 2P cable
GEMB50	50 cm	-450	450 nm Royal Blue	-RA24	Analog reg 0-24V	-TP	Polarizing filter + Transparent cover	-5MS	5 Mt 3P cable + logic start
GEMB100	100 cm	-524	524 nm Green	-CC	Current Control	-WW1	Cover on demand	-WW3	Supply connection on demand
GEMB200	200 cm	-6KR	Bicolour 6K + Red	-CCC	Current on demand				
GEMBXXX	from 3 cm to 600 cm on demand	-6KB	Bicolour 6K + Blue						
		-6KG	Bicolour 6K + Green						
		-625	625 nm Red						
		-660	660 nm Deep Red						
		-730	730 nm IR						
		-850	850 nm IR						
		-950	950 nm IR						
		-1050	1050 nm SWIR						
		-1200	1200 nm SWIR						
		-1300	1300 nm SWIR						
		-1450	1450 nm SWIR						
		-1550	1550 nm SWIR						
		-YYY	Colour on demand						

Cable extensions for M8 and M12: page 60

Not all combinations are available

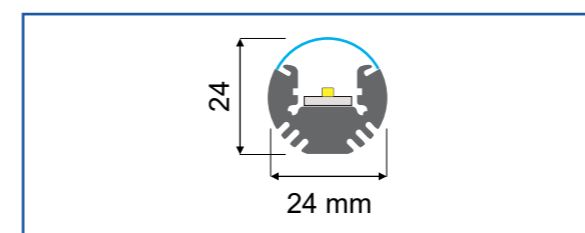
## TYPICAL APPLICATIONS



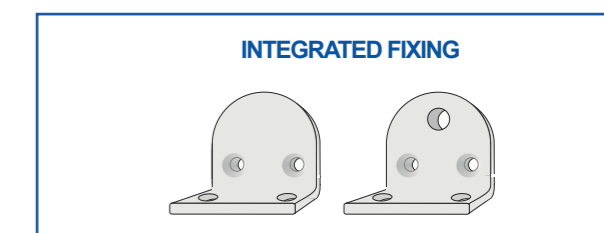
## MODELS EXAMPLES

	Code	Description	Price
Base model	GEMB25-6K-OP	Bar light 25cm White 6000K Opaline cover 1230Lm 340mA 8,2W 2 Mt cable 2 Wires	68 €
Example	GEMB05-625-85-T-M8S	Bar light 5cm RED 625nm Transparent cover 85mA 20cm cable M8 3P M + logic start	87 €
Example	GEMB50-524-L25-5MS	Bar light 50cm Green 524nm 25° Lens cover 840mA 20W 5Mt 3P cable + logic start	181 €

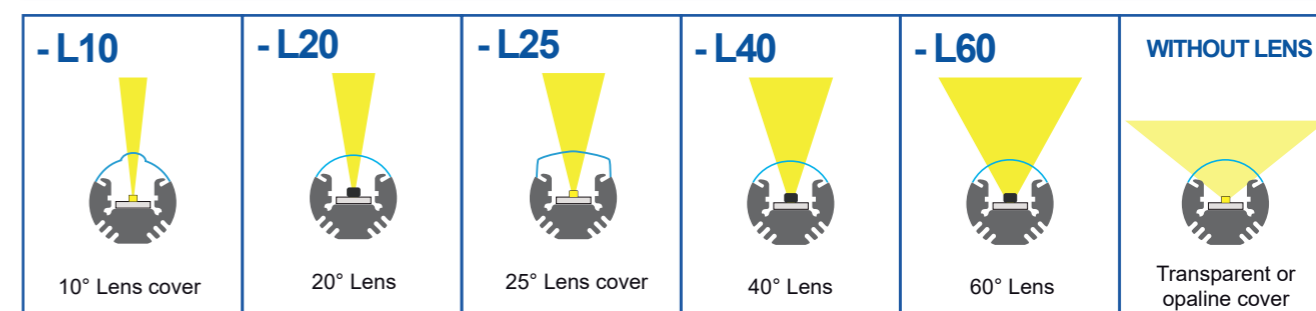
## MECHANICAL DRAWING



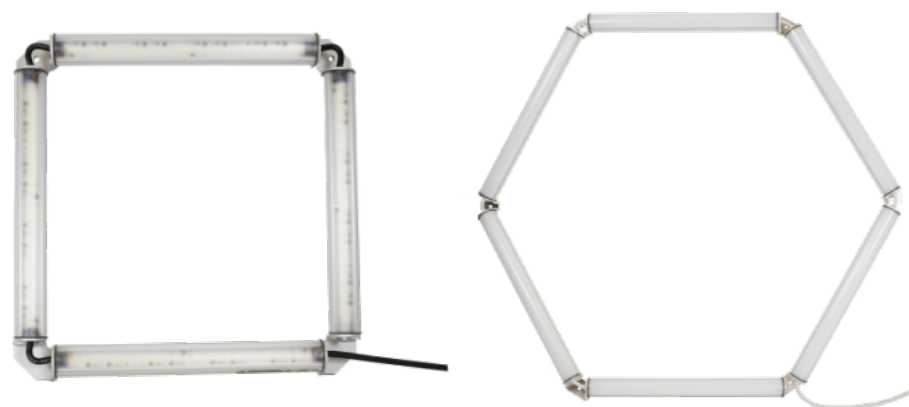
## FIXING



## BEAM ANGLES



# GEMX4-X6



24 Vdc  
IP65 Protection Degree

Ex. Code : **GEMX4-X6** -YYY -CCC -WW1 -WW3

XXX	Base Lengths	-YYY	Led Colours	-CCC	Powers	-WW1	Cover variants
GEMX4-03	3 cm	-6K	Base 6000K Cold White		Base 120 mA per led up to 200	-T	Base Transparent cover
GEMX4-05	5 cm	-4K	4000K Natural White	-20	20 mA per led	-OP	Base Opaline cover
GEMX4-09	9 cm	-365	UV 365 nm	-40	40 mA per led	-L10	10° lens
GEMX4-18	18 cm	-385	UV 385 nm	-70	70 mA per led	-L20	20° lens + transparent cover
GEMX4-25	25 cm	-395	UV 395 nm	-85	85 mA per led	-L25	25° lens
GEMX4-50	50 cm	-405	UV 405 nm	-300	300 mA per led only strobe use	-L40	40° lens + transparent cover
GEMX6-09	9 cm	-RGB	RGB	-RA10	Analog reg 0-10V	-L60	60° lens + transparent cover
GEMX6-18	18 cm	-RGBYW	Five colors configurator at page 53	-RA24	Analog reg 0-24V	-TP	Polarizing filter + Transparent cover
GEMX6-25	25 cm	-450	450 nm Royal Blue	-CC	Current Control	-WW1	Cover on demand
GEMX6-50	50 cm	-524	524 nm Green	-CCC	Current on demand		
GEMX-XXX	from 3 cm to 100 cm on demand	-625	625 nm Red			-WW3	Cables
		-660	660 nm Deep Red				Base 2 Mt cable 2 wires
		-730	730 nm IR			-M8	20 cm cable + M8 3P M
		-850	850 nm IR			-M12	20 cm cable + M12 5P M
		-950	950 nm IR			-S	2 Mt cable + logic start
		-1050	1050 nm SWIR			-M8S	20 cm cable + M8 3P M + logic start
		-1200	1200 nm SWIR			-M12S	20 cm cable + M12 5P M + logic start
		-1300	1300 nm SWIR			-5M	5 Mt 2P cable
		-1450	1450 nm SWIR			-5MS	5 Mt 3P cable + logic start
		-1550	1550 nm SWIR			-WW3	Supply connection on demand
		-YYY	Colour on demand				

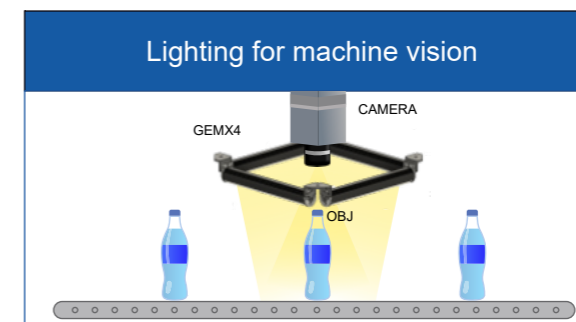
  

XXX	Base Lengths	-YYY	Led Colours	-CCC	Powers	-WW1	Cover variants
GEMX4S-03	3 cm						
GEMX4S-05	5 cm						
GEMX4S-09	9 cm						
GEMX4S-18	18 cm						
GEMX4S-25	25 cm						
GEMX4S-50	50 cm						
GEMX6S-09	9 cm						
GEMX6S-18	18 cm						
GEMX6S-25	25 cm						
GEMX6S-50	50 cm						
GEMX-XXX	from 3 cm to 100 cm on demand						

Not all combinations are available

Cable extensions for M8 and M12: page 60

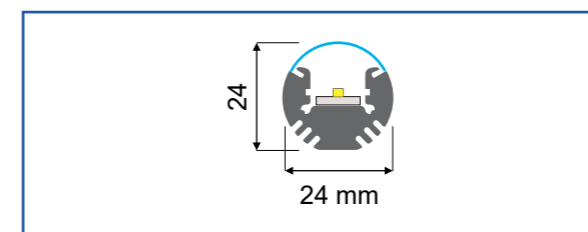
## TYPICAL APPLICATIONS



## MODELS EXAMPLES

	Code	Description	Price
Base model	GEMX4-18-6K-OP	Bar light square composition 18cm White 6000K Opaline cover 3240Lm 920mA 21,6W 2Mt cable 2 Wires	656 €
Example	GEMX6-05-524-OP-S	Bar light hexagonal composition 5cm Green G524 Opaline cover 480mA 12 W 2Mt cable 3 P + logic start	1066 €
Example	GEMX4-18X9-6K-OP-S	Bar light square composition 18 cm x 9 cm White 6000K Opaline cover 2400Lm 700mA 16W 2Mt 3 poles + logic start UL	615 €

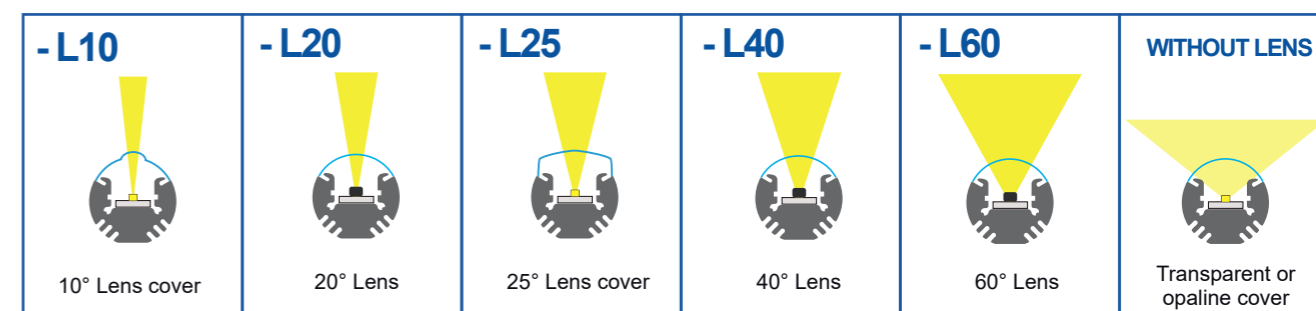
## MECHANICAL DRAWING



## FIXING



## BEAM ANGLES



# GEMPC



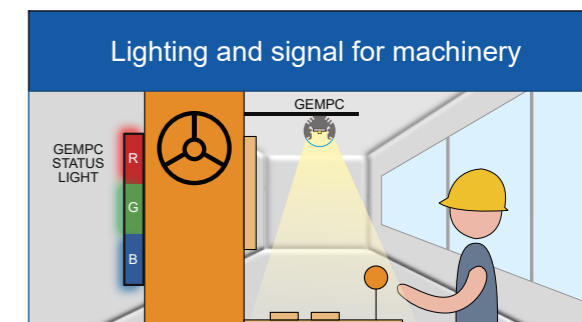
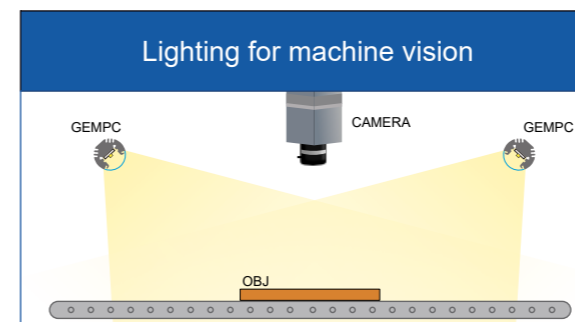
Ex. Code : **GEMPCXXX-YYY-CCC-WW1-WW3**

XXX	Base Lengths	-YYY	Led Colours	-CCC	Powers	-WW1	Cover variants
GEMPC09	9 cm	-6K	Base 6000K Cold White		Base 85 mA per led up to 200	-T	Base Transparent cover
GEMPC18	18 cm	-4K	4000K Natural White		20 mA per led	-OP	Base Opaline cover
GEMPC25	25 cm	-RGB	RGB		40 mA per led	-L10	10° lens
GEMPC34	34 cm	-450	450 nm Royal Blue		300 mA per led only strobe use	-L20	20° lens + transparent cover
GEMPC42	42 cm	-524	524 nm Green		-RA10	-L25	25° lens
GEMPC50	50 cm	-625	625 nm Red		-RA24	-L40	40° lens + transparent cover
GEMPC100	100 cm	-660	660 nm Deep Red		-CC	-L60	60° lens + transparent cover
GEMPC200	200 cm	-730	730 nm IR		-CCC	-P	Polarizing filter cover
GEMPCXXX	from 3 cm to 200 cm on demand	-850	850 nm IR		Current on demand	-WW1	Cover on demand
		-950	950 nm IR				
		-1050	1050 nm SWIR			-WW3	Cables
		-1200	1200 nm SWIR				Base 2 Mt cable 2 wires
		-1300	1300 nm SWIR			-M8	20 cm cable + M8 3P M
		-1450	1450 nm SWIR			-M12	20 cm cable + M12 5P M
		-1550	1550 nm SWIR			-S	2 Mt cable + logic start
		-YYY	Colour on demand			-M8S	20 cm cable + M8 3P M + logic start
						-M12S	20 cm cable + M12 5P M + logic start
						-5M	5 Mt 2P cable
						-5MS	5 Mt 3P cable + logic start
						-A	Cable for food industry
						-WW3	Supply connection on demand

Cable extensions for M8 and M12: page 60

Not all combinations are available

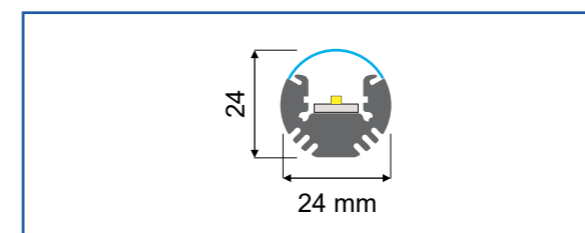
## TYPICAL APPLICATIONS



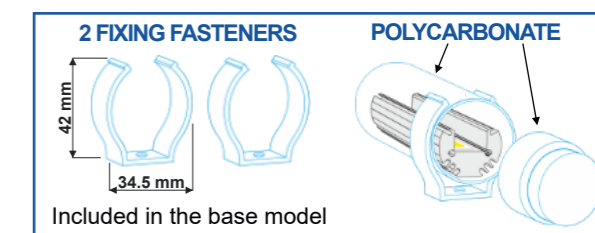
## MODELS EXAMPLES

	Code	Description	Price
Base model	GEMPC25-6K-OP	Bar light 25cm White 6000K Opaline cover 840Lm 250mA 6,0W 2Mt cable 2 Wires	121 €
Example	GEMPC18-6K-L25-A	Bar light 18cm White 6000K 25° lens cover 560Lm 4W 2Mt 2P cable for food industry	144 €
Example	GEMPC18-6K-300-L25-A	Bar light 18cm White 6000K 25° lens cover 2100Lm 14W 2Mt 3P + logic start cable for food industry	190 €

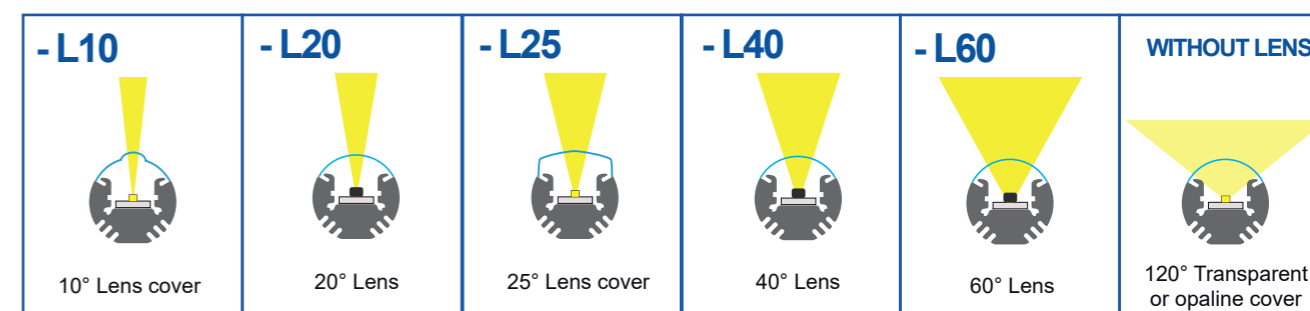
## MECHANICAL DRAWING



## FIXING



## BEAM ANGLES



# GEMHR



**24 Vdc**

**IP65**  
Protection Degree

**IP67**  
Variant Protection Degree

Optional **IO-Link**  
External controller

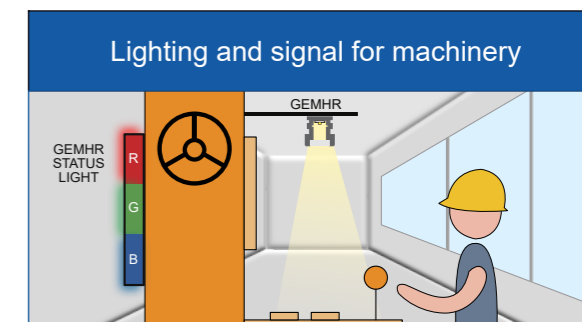
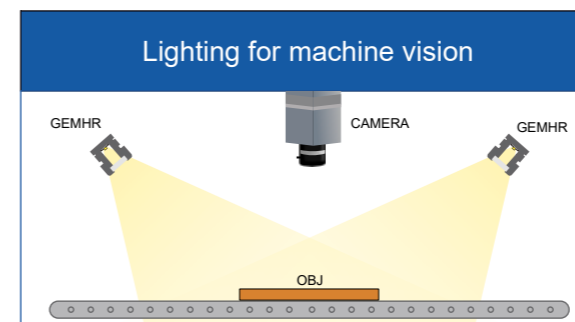
Ex. Code : **GEMHRXXX-YYY-CCC-WW1-WW3**

XXX	Base Lengths	YYY	Led Colours	CCC	Powers	WW1	Cover variants	
GEMHR03	3 cm	-6K	Base 6000K Cold White		Base 120 mA per led up to 200	-T	Base Transparent cover	
GEMHR05	5 cm	-4K	4000K Natural White		20 mA per led	-OP	Base Opaline cover	
GEMHR09	9 cm	-365	UV 365 nm		40 mA per led	-OPC	Collimating filter + Opaline cover	
GEMHR18	18 cm	-385	UV 385 nm		70 mA per led	-V	Pyrex glass 5 mm	
GEMHR25	25 cm	-395	UV 395 nm		85 mA per led	-TP	Polarizing filter + Transparent cover	
GEMHR34	34 cm	-405	UV 405 nm		300 mA per led only strobe use	-OPP	Polarizing filter + Opaline cover	
GEMHR42	42 cm	-RGB	RGB		-RA10	-IP67	IP67 protection degree	
GEMHR50	50 cm	-450	450 nm Royal Blue		-RA24	-WW1	Cover on demand	
GEMHR100	100 cm	-524	524 nm Green		-CC	-WW3	Cables	
GEMHR200	200 cm	-625	625 nm Red		-CCC		Base 2 Mt cable 2 wires	
GEMHRXXX	from 3 cm to 200 cm on demand	-660	660 nm Deep Red				-M8	20 cm cable + M8 3P M
		-730	730 nm IR				-M12	20 cm cable + M12 5P M
		-850	850 nm IR				-S	2 Mt cable + logic start
		-950	950 nm IR				-M8S	20 cm cable + M8 3P M + logic start
		-1050	1050 nm SWIR				-M12S	20 cm cable + M12 5P M + logic start
		-1200	1200 nm SWIR				-5M	5 Mt 2P cable
		-1300	1300 nm SWIR				-5MS	5 Mt 3P cable + logic start
		-1450	1450 nm SWIR				-WW3	Supply connection on demand
		-1550	1550 nm SWIR					
		-YYY	Colour on demand					

Cable extensions for M8 and M12: page 60

Not all combinations are available

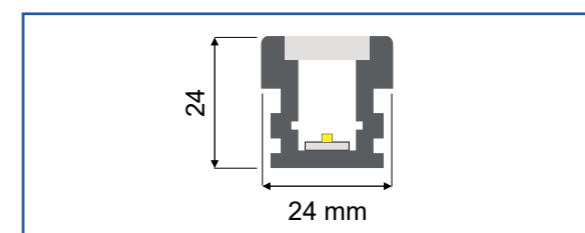
## TYPICAL APPLICATIONS



## MODELS EXAMPLES

	Code	Description	Price
Base model	GEMHR25-6K-OP	Bar light 25cm White 6000K Opaline cover 1230Lm 340mA 8,2W 2 Mt cable 2 Wires	91€
Example	GEMHR50-365-250-T	Bar light 50cm UV365nm Transparent cover GE472 18 led 45° CUN66B 750mA 18W 2Mt cable 2 Wires	466 €
Example	GEMHR180-4K-RA10-T	Bar light 180cm White 4000K Transparent cover 9450Lm 2,66 A 64W analog regulation 0-10V/ 2Mt cable 3 Wires	789 €

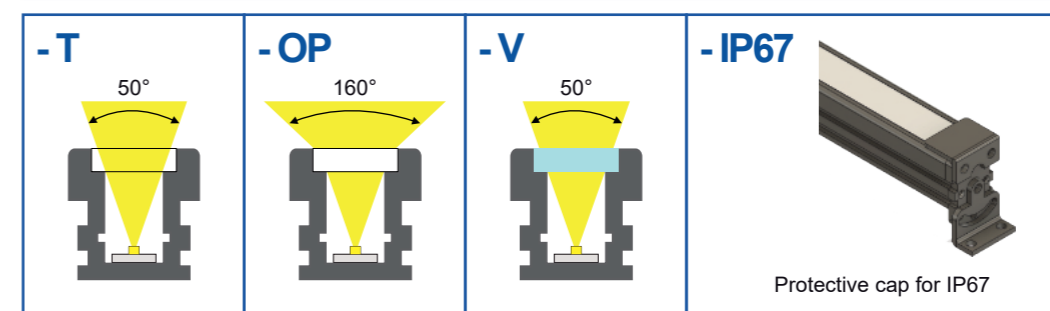
## MECHANICAL DRAWING



## FIXING



## BEAM ANGLES AND COVERS



# GEVA



Ex. Code : **GEV**XXX-YYY-CCC-WW1-WW2

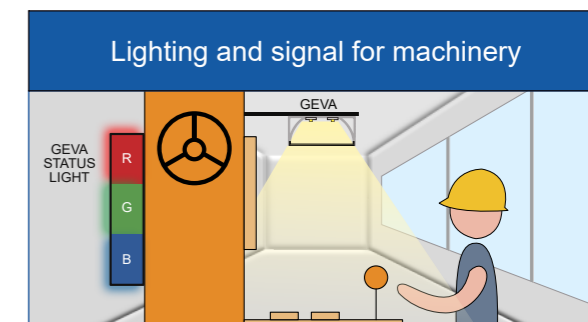
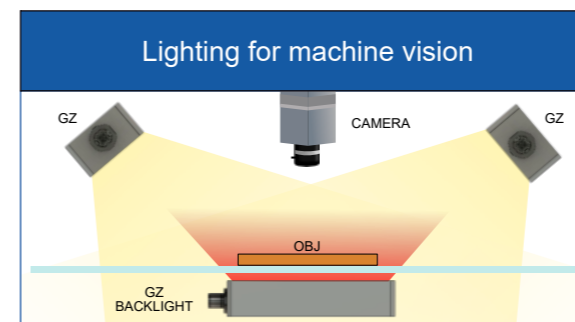
XXX	Base Lengths	YYY	Led Colours	CCC	Powers	WW1	Cover variants
GEVA09	9 cm	-6K	Base 6000K Cold White		Base 120 mA per led up to 200	-OP	Base Opaline cover
GEVA18	18 cm	-4K	4000K Natural White		20 mA per led	-T	Transparent frosted cover
GEVA25	25 cm	-RGB	RGB		40 mA per led	-TP	Polarizing filter + Transparent cover
GEVA34	34 cm	-450	450 nm Royal Blue		85 mA per led	-OPP	Polarizing filter + Opaline cover
GEVA42	42 cm	-524	524 nm Green		300 mA per led only strobe use	-WW1	Cover on demand
GEVA60	60 cm	-625	625 nm Red		-RA10		
GEVA120	120 cm	-660	660 nm Deep Red		-RA24		
GEVXXX	from 9 cm to 200 cm on demand	-730	730 nm IR		-CC		
		-850	850 nm IR		-CCC		
		-950	950 nm IR				
		-1050	1050 nm SWIR				
		-1200	1200 nm SWIR				
		-1300	1300 nm SWIR				
		-1450	1450 nm SWIR				
		-1550	1550 nm SWIR				
		-YYY	Colour on demand				

Up to 2 different colours in a single light

Cable extensions for M8 and M12: page 60

Not all combinations are available

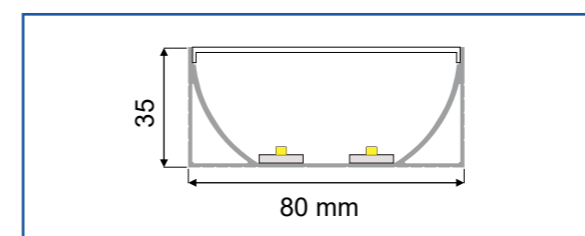
## TYPICAL APPLICATIONS



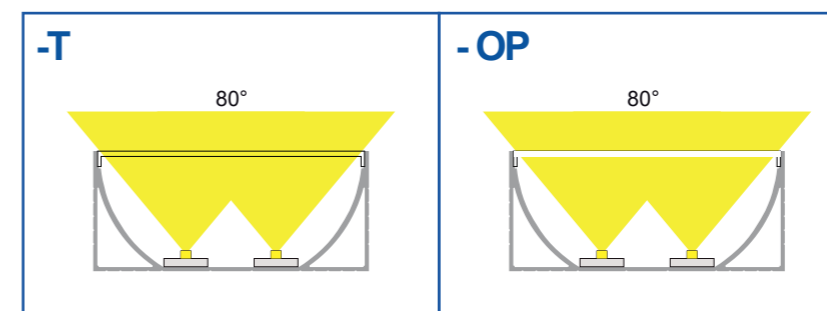
## MODELS EXAMPLES

	Code	Description	Price
Base model	GEVA25-6K-OP	Bar light 25cm White 6000K Opaline cover 2300Lm 680mA 16,4W 2Mt cable 2 Wires	202 €
Example	GEVA42-850-70-OP	Bar light 42cm IR 850nm Opaline cover 700 mA, 16 W 2Mt cable 2 Wires	312 €
Example	GEVA140-524-OP	Bar light 140cm Green 524nm Opaline cover 3,84 A, 92 W 2Mt cable 2 Wires	936 €

## MECHANICAL DRAWING



## BEAM ANGLES AND COVERS



# GP - GENESI POWER BAR

Blue Line



- 24 Vdc
- IP65 Protection Degree
- IP67 Variant Protection Degree

Internal controller with 4 Driving modes	
1	100% Continuous use
2	200% Semi-continuous use
3	270% Strobe use
4	10-100% Analog Reg.

Ex. Code : **GPXXX-YYY-WW1-WW2**

XXX	Base Lengths
GP06	6 cm
GP12	12 cm
GP23	23 cm
GP36	36 cm
GP46	46 cm
GP56	56 cm
GP66	66 cm
GPXXX	From 6 cm to 300 cm on demand

-YYY	Led Colours	
-6K	Base 6000K Cold White	White
-4K	4000K Natural White	
-365	UV 365 nm	UV - A
-385	UV 385 nm	
-395	UV 395 nm	
-405	UV 405 nm	
-450	450 nm Royal Blue	Visible
-524	524 nm Green	
-625	625 nm Red	
-660	660 nm Deep Red	
-730	730 nm IR	Nir
-850	850 nm IR	
-950	950 nm IR	
-1050	1050 nm SWIR	Swir
-1200	1200 nm SWIR	
-1300	1300 nm SWIR	
-1450	1450 nm SWIR	
-1550	1550 nm SWIR	
-YYY	Colour on demand	

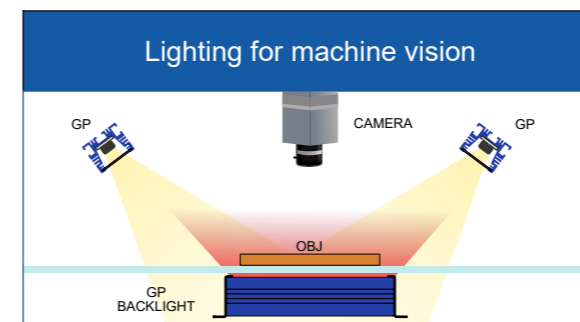
-WW1	Cover variants
-T	Base Transparent cover
-OP	Base Opaline cover BACKLIGHT FUNCTION
-ST	Satin cover
-T67	Transparent cover IP67
-L10	10° lens + transparent cover
-L30	30° lens + transparent cover
-L60	60° lens + transparent cover
-45T	45° Lens + Transparent Cover <small>only UV-A</small>
-TP	Polarizing filter + Transparent cover
-WW1	Cover on demand

-WW2	Cables
	20 cm cable + M12 5P M
-WW2	Supply connection on demand

Cable extensions for M12: page 60

Not all combinations are available

## TYPICAL APPLICATIONS



## PIN-OUT

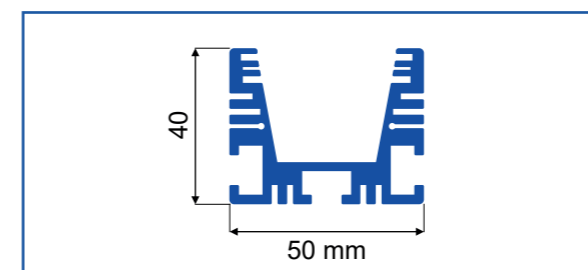


M12 5P Male Connector	
Pin 1	+24V
Pin 2	Start NPN < 1 to 0V
Pin 3	GND
Pin 4	Start PNP > 3 to 24V
Pin 5	1-10V Analog Reg.

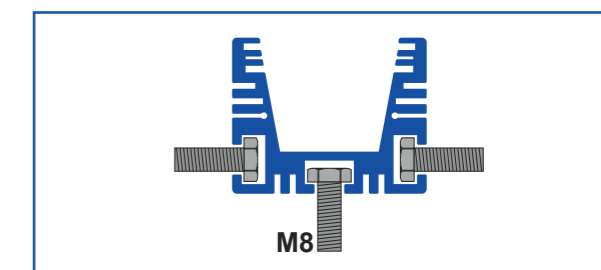
## MODELS EXAMPLES

	Code	Description	Price
Base model	GP23-6K-T	Power bar 4 Driving Modes 23cm White 6000K Transparent cover 2160/14400Lm 0,6/4A 14/96W 20cm cable M12 M 5P	700 €
Example	GP36-365-45T	Power bar 4 Driving Modes 36cm UV365nm 45° lens + transparent cover 0,9/2,7A 22/65W 20cm cable M12 M 5P	1410 €
Example	GP102-850-OP	Power bar & backlight 4 Driving Modes 102cm IR 850nm Opaline cover 1/3,2A 24/77W 20cm cable M12 M 5P	2070 €
Example	GP133-625-L10	Power bar 4 Driving Modes 133cm Red 625nm 10° lens + transparent cover 2,4/24A 58/576W 20cm cable M12 M 5P	2530 €

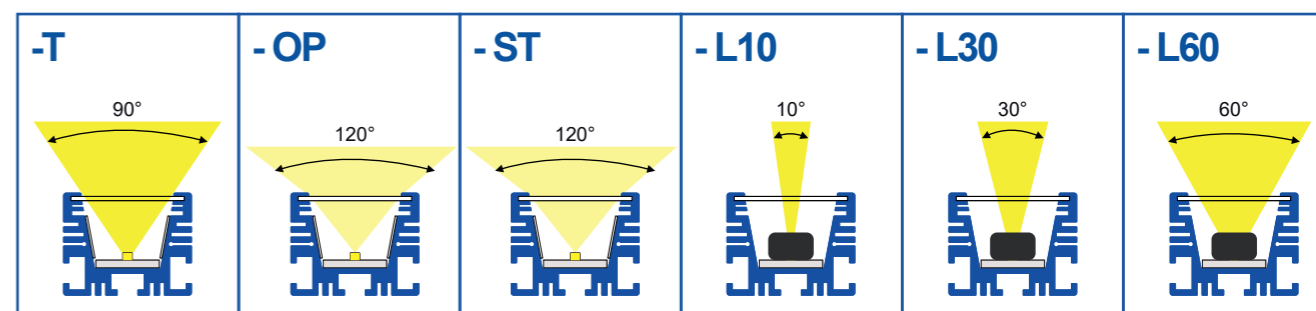
## MECHANICAL DRAWING



## FIXING

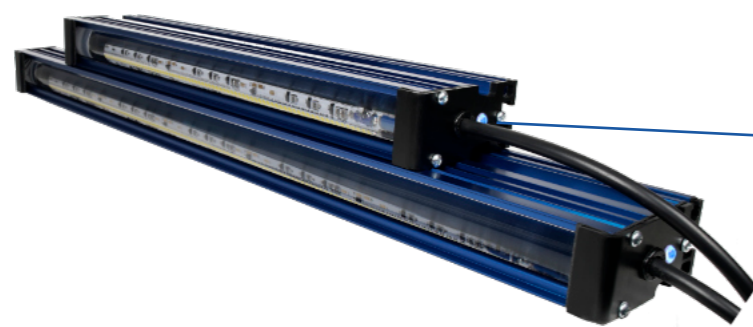


## BEAM ANGLES AND COVERS



# GX - GENESI XBAR

## Blue Line



Internal controller with 4 Driving modes	
1	100% Continuous use
2	200% Semi-continuous use
3	270% Strobe use
4	10-100% Analog Reg.

- 24 Vdc**
- IP54**  
Protection Degree
- IP65**  
Variant Protection Degree

Ex. Code : **GXXXX**-**YYY**-**WW1**-**WW2**-**WW3**

GXXXX	Base Lenghs
GX14	14 cm
GX22	22 cm
GX30	30 cm
GX38	38 cm
GX46	46 cm
GX54	54 cm
GX62	62 cm
GX102	102 cm
GX200	200 cm

-YYY	Led Colours	
-6K	Base 6000K Cold White	White
-4K	4000K Natural White	White
-365	UV 365 nm	UV - A
-385	UV 385 nm	
-395	UV 395 nm	
-405	UV 405 nm	
-450	450 nm Royal Blue	Visible
-524	524 nm Green	
-625	625 nm Red	
-660	660 nm Deep Red	
-730	730 nm IR	Nir
-850	850 nm IR	
-950	950 nm IR	
-1050	1050 nm SWIR	
-1200	1200 nm SWIR	Swir
-1300	1300 nm SWIR	
-1450	1450 nm SWIR	
-1550	1550 nm SWIR	
-1650	1650 nm SWIR	
-YYY	Colour on demand	

GXMLXXX	Base Lenghs
GXML14	14 cm
GXML22	22 cm
GXML30	30 cm
GXML38	38 cm
GXML46	46 cm
GXML54	54 cm
GXML62	62 cm
GXML102	102 cm
GXML200	200 cm

-WW1	GXML Lens variants
-P4R	4° ML Beam angle
-P2	6° ML Beam angle
	Base 12° ML Beam angle
-P2R	22° ML Beam angle
-P1R	45° ML Beam angle

-WW2	GXML Cover variants
	Base without cover
-P	Polarizing filter
-T65	Transparent cover - IP65
-TP65	Transparent cover + Polarizing filter - IP65

GXBXXX	Base Lenghs
GXB14	14 cm
GXB22	22 cm
GXB30	30 cm
GXB38	38 cm
GXB46	46 cm
GXB54	54 cm
GXB62	62 cm
GXB102	102 cm
GXB200	200 cm

-WW1	GXB Lens variants
	Base Internal reflection

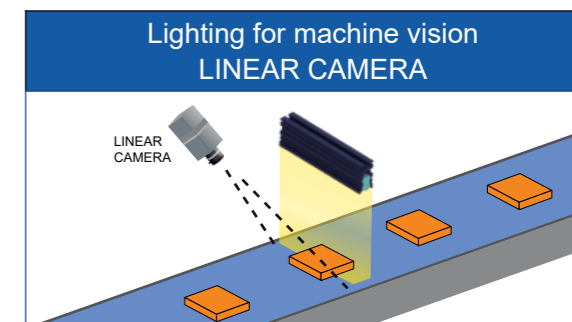
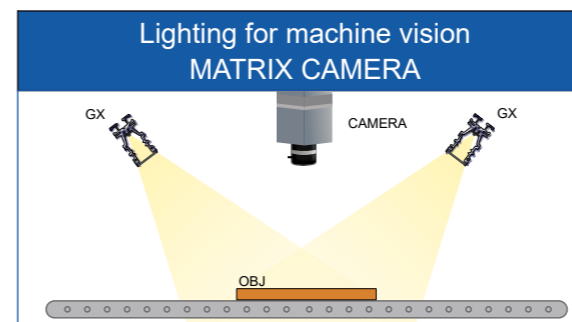
-WW2	GXB Cover variants
	Base opaline satin cover
-T	Transparent cover
-OP	Opaline cover
-IP65	Satin, Transparent or Opaline cover - IP65

-WW3	Cables
	20 cm cable + M12 5P M
-70N	70 cm PVC cable + MATE-N-LOK 6P M ( 1-480704-0 ) 5 wire
-WW3	Supply connection on demand

Not all combinations are available

Cable extensions for M12 and 70N: page 60

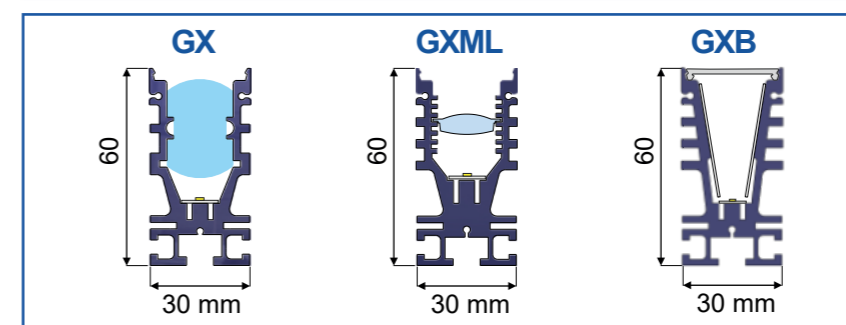
## TYPICAL APPLICATIONS



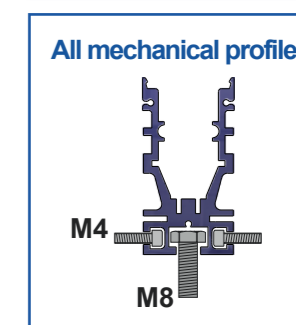
## MODELS EXAMPLES

	Code	Description	Price
Base model	GX14-6K	Power bar 4 Driving Modes 14 cm White 6000K 5° Lens cover 1080/3000Lm 0,3/0,8A 7,2/20W 20cm cable M12 M 5P	420 €
Example	GXML30-850	Power bar 4 Driving Modes 30 cm IR 850nm 12° multi-lens (4° - 45°) cover 0,9/2,4A 22/58W 20cm cable M12 M 5P	1004 €
Example	GXML38-6K-TP65	Power bar 4 Driving Modes 38 cm White 6000K 12° multi-Lens(4°-45°) +Polarizing filter + Transparent cover 4300/11500Lm 1,2/3,2A 29/77W 20cm cable M12 M 5P IP65	1250 €
Example	GXB78-850	Power bar & backlight 4 Driving Modes 78 cm IR 850nm Opaline satin cover 2,5/7,2A 60/173W 20cm cable M12 M 5P	1980 €

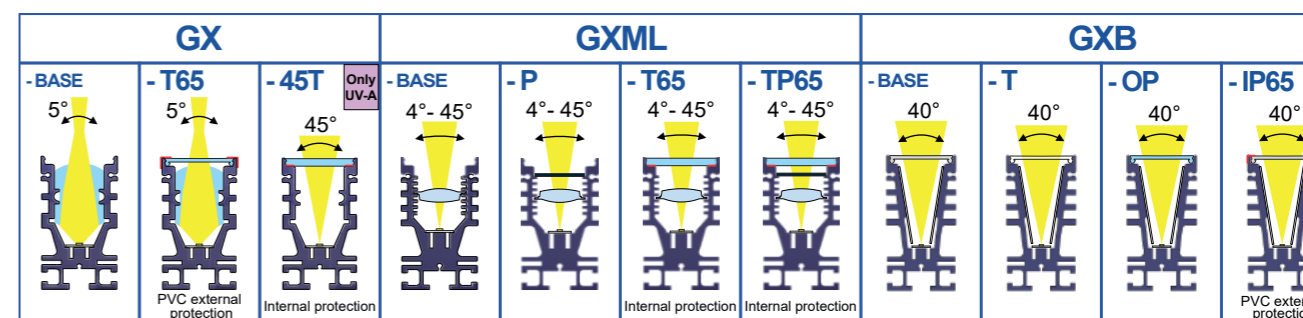
## MECHANICAL DRAWINGS



## FIXING



## BEAM ANGLES AND COVERS





24 Vdc

IP54  
Protection Degree

IP65  
Variant Protection Degree

IP67  
Variant Protection Degree

Ex. Code : **GEVXXX**-**YYY**-**CCC**-**WW1**-**WW2**

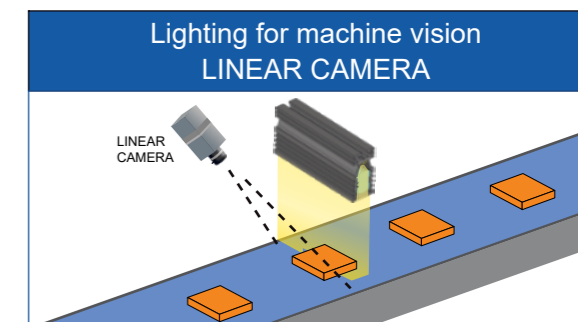
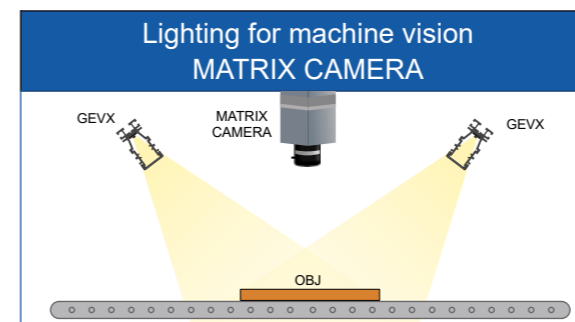
XXX	Base Lengths	-YYY	Led Colours	-CCC	Powers	-WW1	Cover variants
GEVX06	6 cm	-6K	Base 6000K Cold White	UD	70 mA per led ULTRA DENSITY		Base 5° lens cover
GEVX10	10 cm	-4K	4000K Natural White	HD	85 mA per led HIGH DENSITY	-T65	Transparent cover - IP65
GEVX16	16 cm	-365	UV 365 nm	XD	300 mA per led POWER LED	-T67	Transparent cover - IP67 UP TO 1 METER
GEVX20	20 cm	-385	UV 385 nm	YD	2A per LED ONLY STROBE USE	-ML	12° ML 4°- 45° + transparent cover
GEVX28	28 cm	-395	UV 395 nm	-CCC	Current on demand	-L20	20° lens + transparent cover
GEVX34	34 cm	-405	UV 405 nm			-L40	40° lens + transparent cover
GEVX42	42 cm	-RGB	RGB			-TP	lens + Transparent cover + Polarizing filter
GEVX50	50 cm	-RGEYW	Five colors configurator at page 53			-TNP	Transparent cover without lens + Polarizing filter
GEVX60	60 cm	-450	450 nm Royal Blue			-TN	Transparent cover without lens + 3M - IP65
GEVX100	100 cm	-524	524 nm Green				
GEVX150	150 cm	-625	625 nm Red				
GEVX200	200 cm	-660	660 nm Deep Red				
GEVXXX	from 3 cm to 600 cm on demand	-730	730 nm IR				
		-850	850 nm IR				
		-950	950 nm IR				
		-1050	1050 nm SWIR				
		-1200	1200 nm SWIR				
		-1300	1300 nm SWIR				
		-1450	1450 nm SWIR				
		-1550	1550 nm SWIR				
		-YYY	Colour on demand				

Up to 2 different colours in a single light

Cable extensions for M8 and M12: page 60

Not all combinations are available

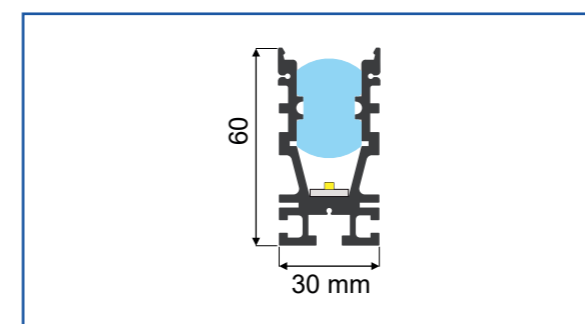
## TYPICAL APPLICATIONS



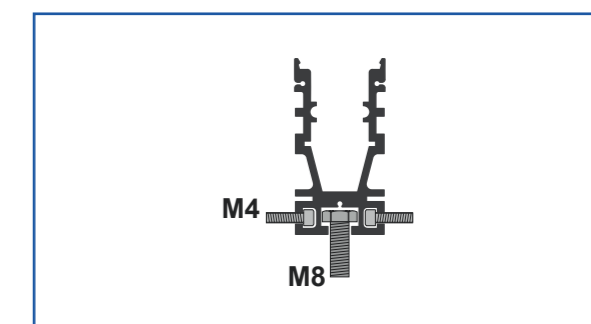
## MODELS EXAMPLES

	Code	Description	Price
Base model	GEVX20-6K-UD	Power bar 20cm White 6000K 5° Lens cover -UD CS GE411 70mA per led 2000Lm 560mA 13,4W 2Mt cable 2 Wires	310 €
Example	GEVX30-365-T65-M12S	Power bar 30cm UV365 nm 5° Lens cover CS GE403 160mA per led 1,12 A 27W IP65 20cm cable M12 5P M + Logic start	1082 €
Example	GEVX240-625-UD	Power bar 240cm Red 625nm 5° Lens cover -UD CS GE411 70mA per led 8,26A 198 W continuous use 2Mt 2 cables 2 Wires	2350 €

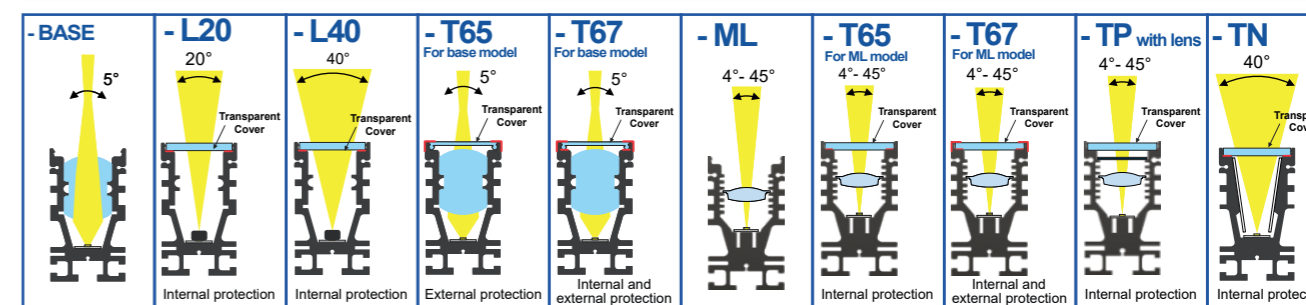
## MECHANICAL DRAWING



## FIXING



## BEAM ANGLES AND COVERS



**NEW SOLUTION**  
DESIGN A NEW ONE  
info@genesi-lux.it



**SAMPLE**  
TEST THE PRODUCT  
info@genesi-lux.it



**DOWNLOAD**  
TECHNICAL SPECIFICATIONS  
www.genesi-elettronica.com



**REQUEST**  
THE PRICE LIST  
info@genesi-lux.it

# GEVXB



- 24 Vdc**
- IP54**  
Protection Degree
- IP65**  
Variant Protection Degree
- IP67**  
Variant Protection Degree

Ex. Code : **GEVXBXXX**-YYY-CCC-WW1-WW2

XXX	Base Lengths	-YYY	Led Colours	-CCC	Powers	-WW1	Cover variants
GEVXB06	6 cm	-6K	Base 6000K Cold White	UD	70 mA per led ULTRA DENSITY		Base satin cover
GEVXB10	10 cm	-4K	4000K Natural White	HD	85 mA per led HIGH DENSITY	-OP	Opaline cover
GEVXB16	16 cm	-365	UV 365 nm	XD	300 mA per led POWER LED	-OPB	Semi-opaline black cover
GEVXB20	20 cm	-385	UV 385 nm	YD	2A per LED ONLY STROBE USE	-IP65	Satin cover + 3M - IP65
GEVXB28	28 cm	-395	UV 395 nm	-CCC	Current on demand	-IP67	Satin cover + 3M - IP67 UP TO 1 METER
GEVXB34	34 cm	-405	UV 405 nm			-OPC	Collimating filter + Opaline cover
GEVXB42	42 cm	-RGB	RGB			-WW1	Cover on demand
GEVXB50	50 cm	-450	450 nm Royal Blue				
GEVXB60	60 cm	-524	524 nm Green				
GEVXB100	100 cm	-625	625 nm Red				
GEVXB150	150 cm	-660	660 nm Deep Red				
GEVXB200	200 cm	-730	730 nm IR				
GEVXBXXX	from 3 cm to 600 cm on demand	-850	850 nm IR				
		-950	950 nm IR				
		-1050	1050 nm SWIR				
		-1200	1200 nm SWIR				
		-1300	1300 nm SWIR				
		-1450	1450 nm SWIR				
		-1550	1550 nm SWIR				
		-1650	1650 nm SWIR				
		-YYY	Colour on demand				

-WW2	Cables
	Base 2 Mt cable 2 wires
-M8	20 cm cable + M8 3P M
-M12	20 cm cable + M12 5P M
-S	2 Mt cable + logic start
-M8S	20 cm cable + M8 3P M + logic start
-M12S	20 cm cable + M12 5P M + logic start
-5M	5 Mt 2P cable
-5MS	5 Mt 3P cable + logic start
-WW2	Supply connection on demand

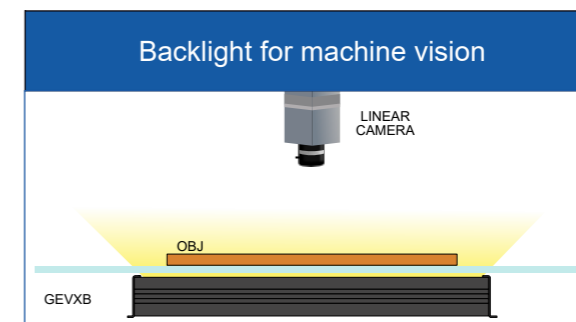
  

Cable extensions for M8 and M12: page 60

Up to 2 different colours in a single light

Not all combinations are available

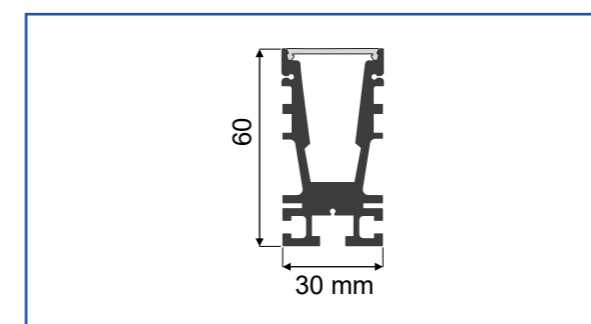
## TYPICAL APPLICATIONS



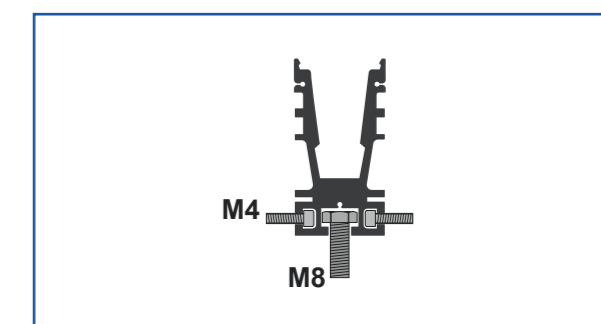
## MODELS EXAMPLES

	Code	Description	Price
Base model	GEVXB20-6K-UD	Power backlight 20 cm White 6000K satin cover -UD CS GE411 70mA per led 2000Lm 560mA 13,4W 2Mt cable 2 Wires	300 €
Example	GEVXB140-850-70	Power backlight 140 cm led IR 850nm satin cover SC GE366 2,38 A 57W 2Mt cable 2 Wires	1400 €
Example	GEVXB350-625-500-IP65	Power backlight 350 cm led RED 625nm satin cover CS GE490 500mA per led 10,5 A 252W IP65 2 cable 2Mt 2 Wires	3550 €

## MECHANICAL DRAWING



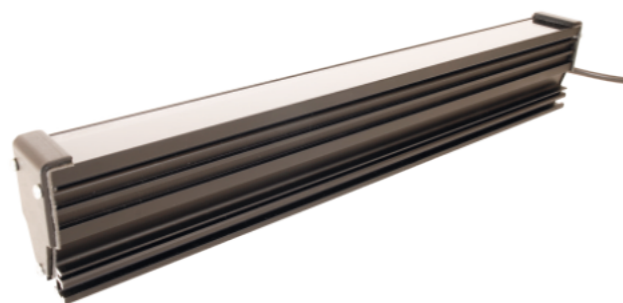
## FIXING



## BEAM ANGLES AND COVERS

-BASE	-OP	-OPB	-IP65	-IP67
Satin cover	Opaline cover	Black cover	Satin cover	Satin cover
22 mm uniform line	22 mm uniform line	22 mm uniform line	22 mm uniform line PVC external protection	22 mm uniform line 3m protection and PVC external protection

# GEVXD FROM 1 TO 4 CHANNELS IN A SINGLE BAR



24 Vdc  
IP54 Protection Degree

Ex. Code : **GEVXDXXX**-YYY-CCC-WW1-WW2

XXX	Base Lengths	-YYY	Led Colours	-CCC	Powers	-WW1	Cover variants
GEVXD20	20 cm	-6K	Base 6000K Cold White		Base 1 A per LED	-L	Base 5° lens for linear camera
GEVXD36	36 cm	-4K	4000K Natural White		Current on demand (0-4 A)	-M	Base transparent cover for matrix camera
GEVXD52	52 cm	-36	UV 365 nm			-ST	Satin cover for backlight use
GEVXD84	84 cm	-38	UV 385 nm			-OP	Opaline cover for backlight use
GEVXDXXX	from 20 cm to 600 cm on demand	-39	UV 395 nm			-WW1	Cover on demand
		-40	UV 405 nm				
		-45	450 nm Royal Blue				
		-52	524 nm Green				
		-62	625 nm Red				
		-66	660 nm Deep Red				
		-7	730 nm IR				
		-8	850 nm IR				
		-9	950 nm IR				
		-10	1050 nm SWIR				
		-11	1140 nm SWIR				
		-12	1200 nm SWIR				
		-13	1300 nm SWIR				
		-14	1450 nm SWIR				
		-15	1550 nm SWIR				
		-16	1650 nm SWIR				
		-19	1900 nm SWIR				
		-YYY	Colour on demand				

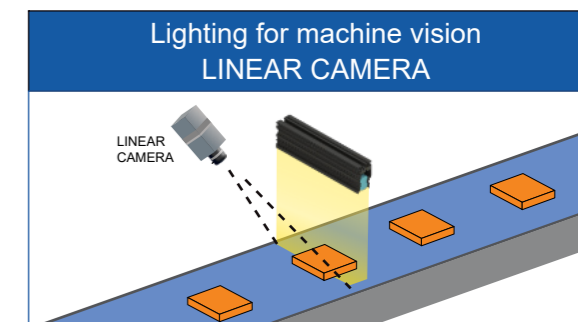
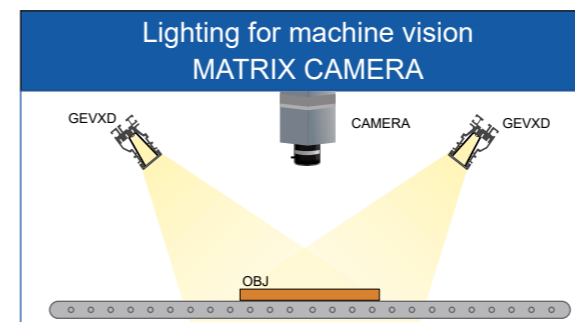
-WW2	Cables
	Base 2 Mt cable 2 wires
-M8	20 cm cable + M8 3P M
-M12	20 cm cable + M12 5P M
-S	2 Mt cable + logic start
-M8S	20 cm cable + M8 3P M + logic start
-M12S	20 cm cable + M12 5P M + logic start
-5M	5 Mt 2P cable
-5MS	5 Mt 3P cable + logic start
-WW2	Supply connection on demand

Cable extensions for M8 and M12: page 60

Not all combinations are available

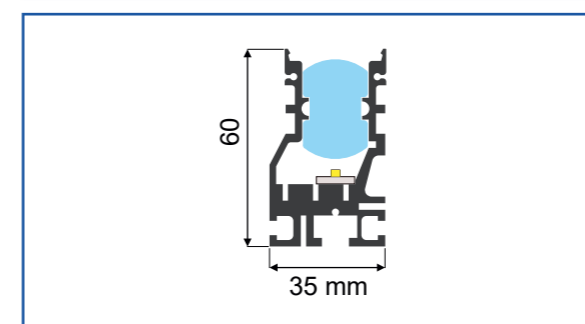
## TYPICAL APPLICATIONS



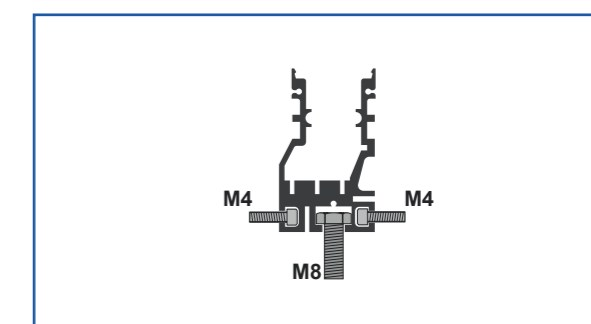
## MODELS EXAMPLES

	Code	Description	Price
Base model	GEVXD20-12131415-1A-L	Power bar 4 channels 20cm SWIR 20cm 1200-1300-1450-1550nm 5° lens cover 1,2A 29W 20cm cable M12 8P M + 4 logic start	2020 €
Example	GEVXD52-6K1313-1A-L	Power bar 3 channels 52cm VIS-SWIR 6000K-1300-1300nm 5° lens cover 3,6A 86W 20cm cable M12 5P M + 2 logic start	2770 €
Example	GEVXD180-1515-1A-L	Power bar 2 channels 180cm 1550-1550nm 5° lens cover 6,48A 155W 20cm cable M12 5P M + 2 logic start	6600 €

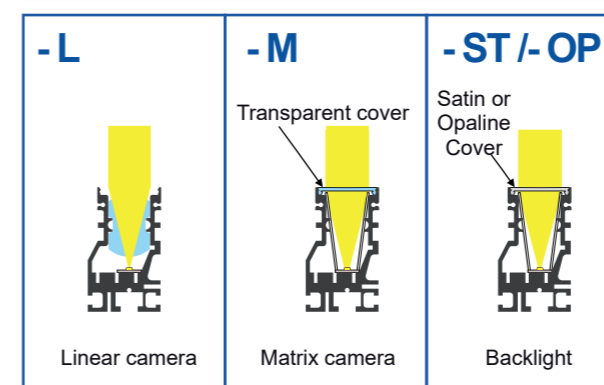
## MECHANICAL DRAWING



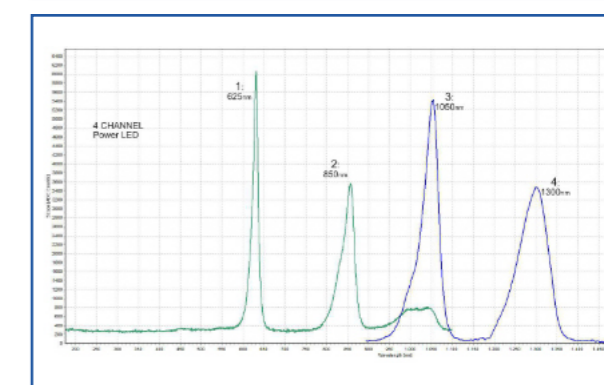
## FIXING



## BEAM ANGLES AND COVERS



## WAVELENGTHS EXAMPLE





24 Vdc

IP65 Protection Degree

Ex. Code : **GESTXXX-YYY-CCC-WW1-WW2**

XXX	Base Diameters	-YYY	Led Colours	-CCC	Powers	-WW1	Cover variants
Exposed Leds		-6K	Base 6000K Cold White		Base 50 mA per led GEST42-74-120		Base IP20 exposed Leds GEST42-74-120
GEST42	42 mm	-4K	4000K Natural White		Base 50 mA per led GEST44-76-122		Base without lens GEST44-76-122-76-100
GEST74	74 mm	-365	UV 365 nm		Base 300 mA per led GEST76	-T	Transparent cover
GEST120	120 mm	-385	UV 385 nm		Base 500 mA per led GEST100	-OP	Opaline cover
With cover		-395	UV 395 nm		-30	-ST	Satin cover
GEST44	44 mm	-405	UV 405 nm		-100	-L20	20° lens, transparent cover
GEST76	76 mm	-450	450 nm Royal Blue		-1A	-L40	40° lens, transparent cover
GEST122	122 mm	-524	524 nm Green		-2A	-L60	60° lens, transparent cover
With lens + cover		-625	625 nm Red		-CCC	-P	Polarizing filter cover
GEST76	76 mm	-660	660 nm Deep Red			-OPP	Polarizing filter + Opaline cover
GEST100	100 mm	-730	730 nm IR			-WW1	Cover on demand
GESTXXX	Diameter on demand	-850	850 nm IR				
		-950	950 nm IR				
		-YYY	Colour on demand				

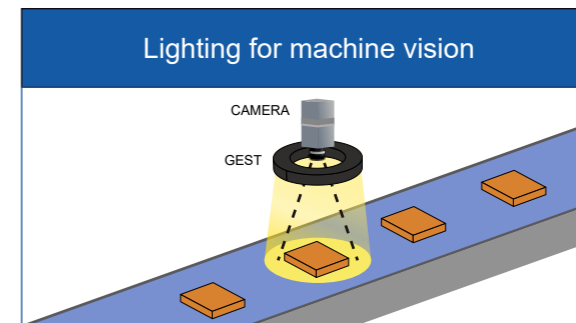
  

-WW2	Cables
	Base 2 Mt cable 2 wires
-M8	20 cm cable + M8 3P M
-M12	20 cm cable + M12 5P M
-S	2 Mt cable + logic start
-M8S	20 cm cable + M8 3P M + logic start
-M12S	20 cm cable + M12 5P M + logic start
-5M	5 Mt 2P cable
-5MS	5 Mt 3P cable + logic start
-WW3	Supply connection on demand

Cable extensions for M8 and M12: page 60

Not all combinations are available

## TYPICAL APPLICATIONS



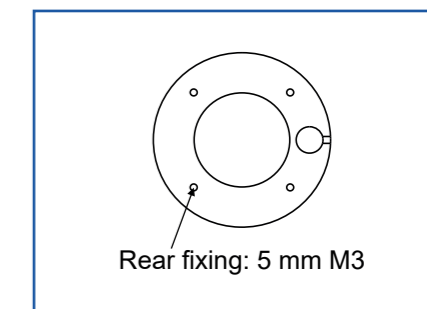
## MODELS EXAMPLES

	Code	Description	Price
Base model	GEST100-6K-L20	Ring light 100mm diameter White 6000K 20° Lens cover 1800Lm 500mA 12W 2Mt cable 2 Wires	640 €
Example	GEST42-625-M8	Ring light 42mm diameter no cover IP20 Red 625nm 150mA 3,6W 20cm cable M8 3 poles	252 €
Example	GEST76-6K-OP-M8S	Ring light 76mm diameter White 6000K Opaline cover IP65 1080Lm 300mA 7,2W 20cm M8 3 poles + logic start	290 €

## MECHANICAL DRAWING

XXX	A	B	C
GEST42	10	42	10
GEST74	43	74	
GEST120	75	120	
GEST44	8	44	25
GEST76	41	76	
GEST122	73	122	
GEST76	41	76	
GEST100	50	100	

## FIXING

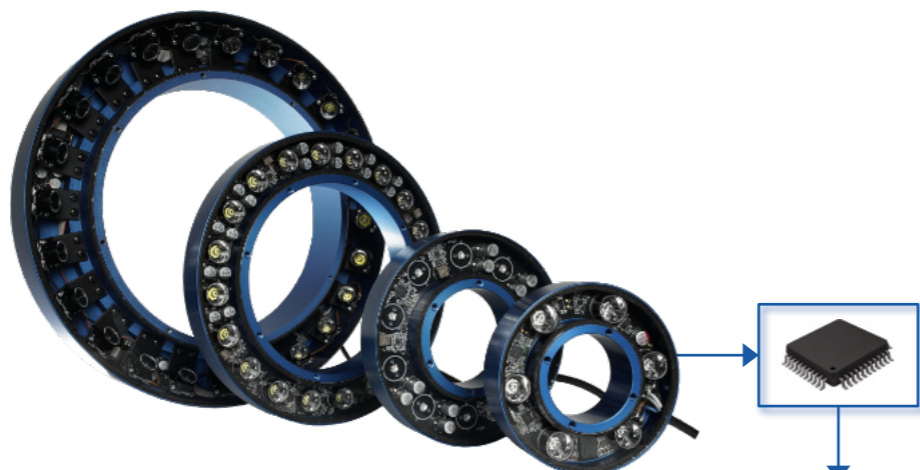


## BEAM ANGLES

EXPOSED LEDS	WITHOUT LENS	- T	-OP / -ST	- L20	- L40	- L60
120°	90°	90°	120°	20° Lens	40° Lens	60° Lens

# GEST MEGA-RING

Blue Line



- 24 Vdc
- IP65 Protection Degree
- IP67 Variant Protection Degree

Internal controller with 4 Driving modes	
1	100% Continuous use
2	200% Semi-continuous use
3	270% Strobe use
4	10-100% Analog Reg.

Ex. Code : **GESTXXX-YYY-WW1-WW2**

XXX	Base Diameters
GEST99	99 mm
GEST130	130 mm
GEST200	200 mm
GEST300	300 mm
GESTXXX	Diameter up to 500 mm

-YYY	Led Colours	
-6K	Base 6000K Cold White	White
-4K	4000K Natural White	
-365	UV 365 nm	UV - A
-385	UV 385 nm	
-395	UV 395 nm	
-405	UV 405 nm	
-450	450 nm Royal Blue	Visibile
-524	524 nm Green	
-625	625 nm Red	
-660	660 nm Deep Red	
-730	730 nm IR	Nir
-850	850 nm IR	
-950	950 nm IR	
-1050	1050 nm SWIR	Swir
-1200	1200 nm SWIR	
-1300	1300 nm SWIR	
-1450	1450 nm SWIR	
-1550	1550 nm SWIR	
-YYY	Colour on demand	

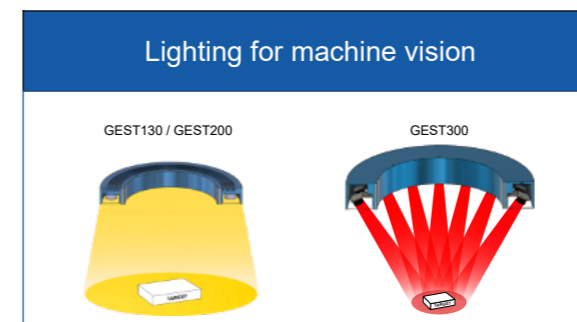
-WW1	Cover variants
-T	Base Transparent cover (90°)
-OP	Opaline cover
-L10	10° lens + transparent cover
-L30	30° lens + transparent cover
-L60	60° lens + transparent cover
-45T	45° Lens + Transparent cover <small>Only UV-A</small>
-IP67	IP67 protection degree
-A10	10° Inclination angle
-A25	25° Inclination angle
-A50	50° Inclination angle
-WW1	Cover on demand

-WW2	Cables
	20 cm cable + M12 5P M
-WW2	Supply connection on demand

Cable extensions for M12: page 60

Not all combinations are available

## TYPICAL APPLICATIONS



## PIN-OUT

M12 5P Male Connector	
Pin 1	+24V
Pin 2	Start NPN < 1 to 0V
Pin 3	GND
Pin 4	Start PNP > 3 to 24V
Pin 5	1-10V Analog Reg.

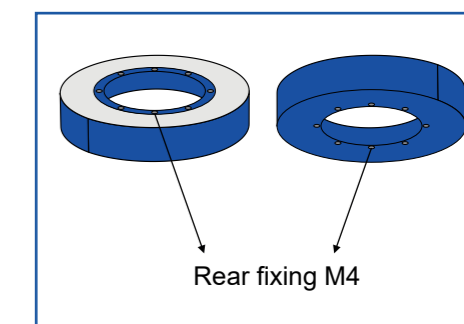
## MODELS EXAMPLES

	Code	Description	Price
Base model	GEST200-6K-L10	Mega-ring light 4 Driving Modes 200mm White 6000K 10° Lens transparent cover 4500/22500Lm 1,25/6,25A 30/150W 20cm cable M12 M 5P	1290 €
Example	GEST130-365-45T	Mega-ring light 4 Driving Modes 130mm UV 365nm 45° Lens transparent cover 0,4/1,25A 10/30W 20cm cable M12 M 5P	1140 €
Example	GEST365-6K-L30-A40	Mega-ring light 4 Driving Modes 365mm White 6000K 30° Lens transparent cover 4500/22500Lm Inclination angle 40° 1,25/6,25A 30/150W 20cm cable M12 M 5P	3860 €

## MECHANICAL DRAWING

XXX	A	B	C
GEST99	46	99	24
GEST130	60	130	24
GEST200	130	200	24
GEST300	200	300	45
GESTXXX	Diameter up to 500 mm		

## FIXING



## BEAM ANGLES

<b>-T</b> 90°	<b>-OP</b> 120°	<b>-L10</b> 10° Lens	<b>-L30</b> 30° Lens	<b>-L60</b> 60° Lens	<b>-A</b> Inclination Angle from X° to X° Only GEST300 and GESTXXX
------------------	--------------------	-------------------------	-------------------------	-------------------------	--

# GES



24 Vdc  
IP67 Protection Degree

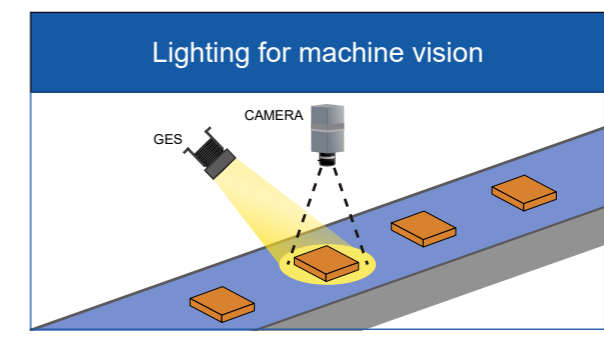
Ex. Code : **GESXXX**-**YYY**-**CCC**-**WW1**-**WW2**

XXX	Base Diameters	-YYY	Led Colours	-CCC	Powers	-WW1	Cover variants
GES40	40 mm	-6K	Base 6000K Cold White		Base 175 mA GES40	-T	Base Transparent cover
GES50	50 mm	-4K	4000K Natural White		Base 250 mA GES50	-OP	Base Opaline cover
GES70	70 mm	-365	UV 365 nm		Base 500 mA GES70	-V	Pyrex glass 3 mm
GES90	90 mm	-385	UV 385 nm		Base 1 A GES90	-L10	10° lens + transparent cover
GESXX	Diameter on demand	-395	UV 395 nm	-CC	Current Control	-L20	20° lens + transparent cover
		-405	UV 405 nm			-L30	30° lens + transparent cover
		-RGB	RGB			-L40	40° lens + transparent cover
		-450	450 nm Royal Blue			-L60	60° lens + transparent cover
		-524	524 nm Green			-P	Polarizing filter cover
		-625	625 nm Red			-TP	Polarizing filter + Transparent cover
		-660	660 nm Deep Red			-OPP	Polarizing filter + Opaline cover
		-730	730 nm IR			-WW1	Cover on demand
		-850	850 nm IR				
		-950	950 nm IR				
		-1050	1050 nm SWIR			-WW2	Cables
		-1200	1200 nm SWIR				Base 2 Mt cable 2 wires
		-1300	1300 nm SWIR			-M8	20 cm cable + M8 3P M
		-1450	1450 nm SWIR			-M12	20 cm cable + M12 5P M
		-1550	1550 nm SWIR			-S	2 Mt cable + logic start
		-YYY	Colour on demand			-M8S	20 cm cable + M8 3P M + logic start
						-M12S	20 cm cable + M12 5P M + logic start
						-5M	5 Mt 2P cable
						-5MS	5 Mt 3P cable + logic start
						-WW2	Supply connection on demand

Not all combinations are available

Cable extensions for M8 and M12: page 60

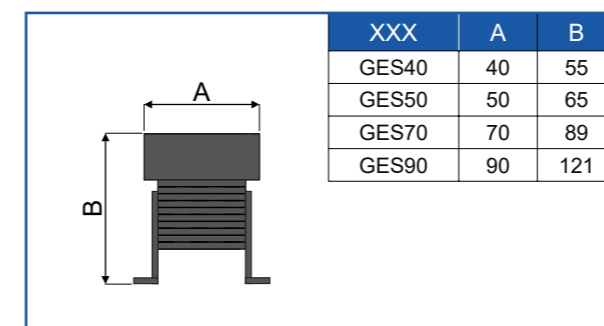
## TYPICAL APPLICATIONS



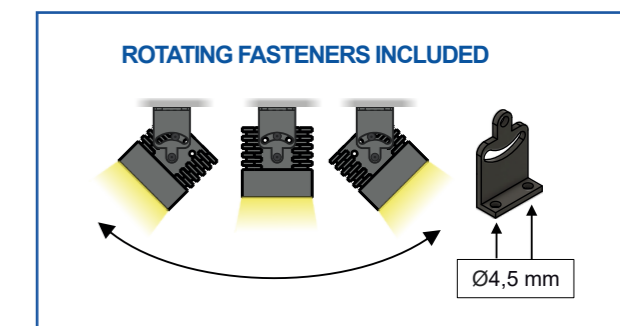
## MODELS EXAMPLES

	Code	Description	Price
Base model	GES40-6K-L10-T	Spot light 40mm diameter White 6000K 10° Lens transparent cover 450Lm 0,175A 4W 2Mt cable 2 Wires	215 €
Example	GES70-625-L20-T-M12	Spot light 70mm diameter Red 625nm 20° Lens transparent cover 500mA 12W 20cm M12 cable 5 poles	570 €
Example	GES90-625-L20-T-M12	Spot light 90mm diameter Red 625nm 20° Lens transparent cover 1A 24W M12 cable 5 poles	780 €

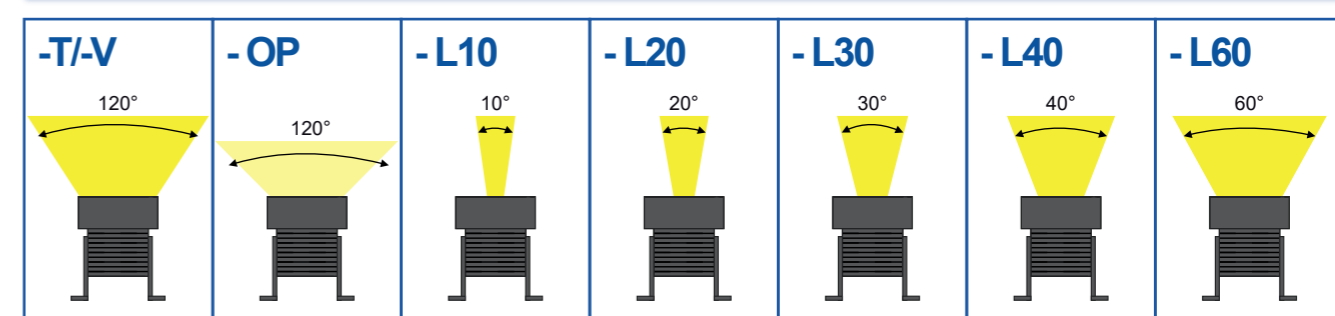
## MECHANICAL DRAWING



## FIXING

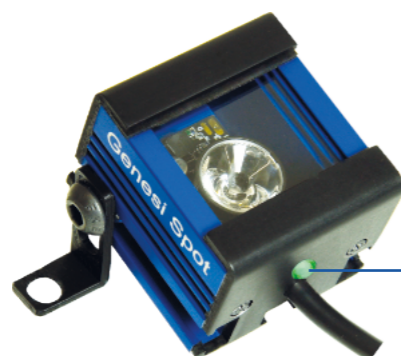


## BEAM ANGLES AND COVERS



# GS - GENESI SPOT

## Blue Line



- 24 Vdc
- IP65 Protection Degree
- IP67 Variant Protection Degree



Internal controller with 4 Driving modes	
1	100% Continuous use
2	200% Semi-continuous use
3	270% Strobe use
4	10-100% Analog Reg.

Ex. Code : **GSXXX** -**YYY** -**WW1** -**WW2**

XXX	Base Lengths
GSX1	5 cm
GSQ1	5 cm
GSQ2	9 cm
GSQ3	12 cm
GSXXX	from 5 cm to 50 cm on demand

-YYY	Led Colours	
-6K	Base 6000K Cold White	White
-4K	4000K Natural White	
-365	UV 365 nm	UV - A
-385	UV 385 nm	
-395	UV 395 nm	
-405	UV 405 nm	
-450	450 nm Royal Blue	Visible
-524	524 nm Green	
-625	625 nm Red	
-660	660 nm Deep Red	
-730	730 nm IR	
-850	850 nm IR	Nir
-950	950 nm IR	
-1050	1050 nm SWIR	
-1200	1200 nm SWIR	Swir
-1300	1300 nm SWIR	
-1450	1450 nm SWIR	
-1550	1550 nm SWIR	
-YYY	Colour on demand	

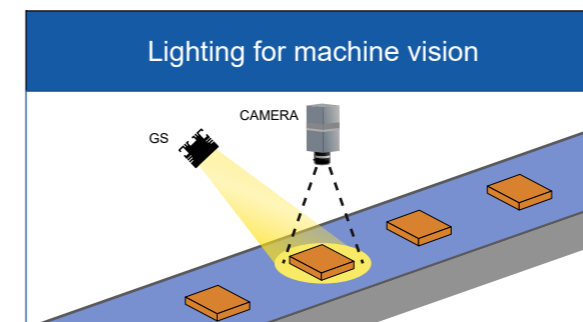
-WW1	Cover variants
-T	Base Transparent cover
-OP	Base Opaline cover
-ST	Satin cover
-T67	Transparent cover IP67
-L10	10° lens + transparent cover
-L30	30° lens + transparent cover
-L60	60° lens + transparent cover
-45T	45° Lens + Transparent Cover <small>only UV-A</small>
-TP	Polarizing filter + Transparent cover
-WW1	Cover on demand

-WW2	Cables
	20 cm cable + M12 5P M
-WW2	Supply connection on demand

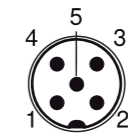
Cable extensions for M12: page 60

Not all combinations are available

## TYPICAL APPLICATIONS



## PIN-OUT

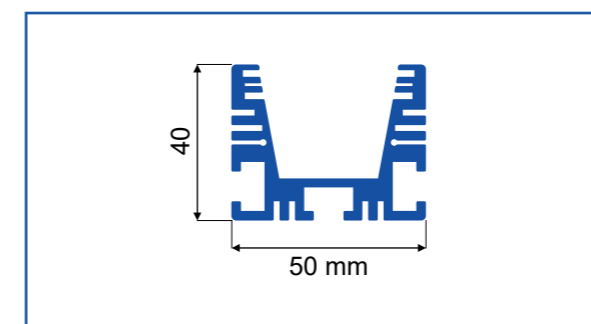


M12 5P Male Connector	
Pin 1	+24V
Pin 2	Start NPN < 1 to 0V
Pin 3	GND
Pin 4	Start PNP > 3 to 24V
Pin 5	1-10V Analog Reg.

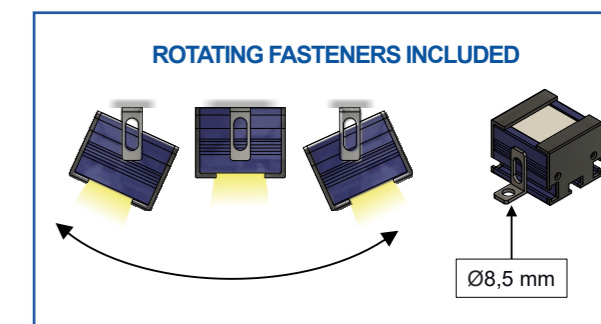
## MODELS EXAMPLES

	Code	Description	Price
Base model	GSX1-6K-L10	Spot light 4 Driving Modes 50x50mm White 6000K 10° Lens transparent cover 600/2250Lm 0,2/0,65A 4/15W 20cm cable M12 M 5P	270 €
Example	GSX1-1450-L10	Spot light 4 Driving Modes 50x50mm SWIR 1450nm 10° lens + transparent cover 0,1/0,3A 2/6W 20 cm cable M12 M 5P	460 €
Example	GSQ1-524-L30	Spot light 4 core 4 Driving Modes 50x50mm Green 524nm 30° lens + transparent cover 0,4/2A 8/50W 20 cm cable M12 M 5P	530 €

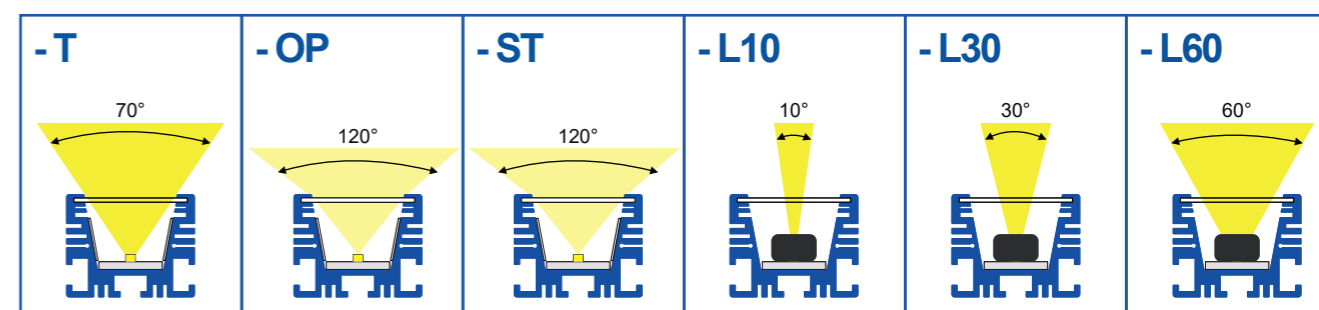
## MECHANICAL DRAWING



## FIXING



## BEAM ANGLES AND COVERS



# GERE



**24 Vdc**

**IP40**  
Protection Degree

**IP54**  
Variant Protection Degree

Ex. Code : **GEREAABB**-YYY-CCC-WW1-WW2

AABB	Lengths	Heights
GERE1004	10 cm	4 cm
GERE1007	10 cm	7 cm
GERE1010	10 cm	10 cm
GERE2010	20 cm	10 cm
GERE3010	30 cm	10 cm
GERE0520	5 cm	20 cm
GERE2020	20 cm	20 cm
GERE3020	30 cm	20 cm
GERE3030	30 cm	30 cm
GERE4030	40 cm	30 cm
GERE4040	40 cm	40 cm
GERE5020	50 cm	20 cm
GERE6020	60 cm	20 cm
GERE5050	50 cm	50 cm
GERE6060	60 cm	60 cm
GEREAABB	from 4 cm to 200 cm on demand	

-YYY	Led Colours	
-6K	Base 6000K Cold White	White
-4K	4000K Natural White	White
-365	UV 365 nm	UV - A
-385	UV 385 nm	
-395	UV 395 nm	
-405	UV 405 nm	
-RGB	RGB	Visible
-450	450 nm Royal Blue	
-524	524 nm Green	
-625	625 nm Red	
-660	660 nm Deep Red	
-730	730 nm IR	Nir
-850	850 nm IR	
-950	950 nm IR	
-YYY	Colour on demand	

Up to 3 different colours in a single light

-CCC	Powers
	Base 30 mA per led UP TO GERE3020
	Base 20 mA per led FROM GERE3030
-CC	Current Control
-100	100 mA per led
-CCC	Current on demand

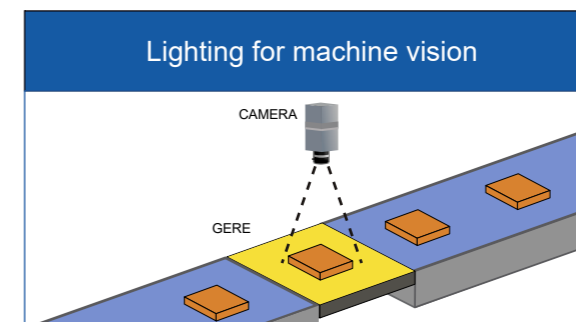
-WW1	Cover variants
	Base Opaline cover
-T	Transparent cover
-OPC	Collimating filter + Opaline cover
-TP	Polarizing filter + Transparent cover
-OPP	Polarizing filter + Opaline cover
-IP54	IP54
-WW1	Cover on demand

-WW2	Cables
	Base 2 Mt cable 2 wires
-M8	20 cm cable + M8 3P M
-M12	20 cm cable + M12 5P M
-S	2 Mt cable + logic start
-M8S	20 cm cable + M8 3P M + logic start
-M12S	20 cm cable + M12 5P M + logic start
-5M	5 Mt 2P cable
-5MS	5 Mt 3P cable + logic start
-WW2	Supply connection on demand

Cable extensions for M8 and M12: page 60

Not all combinations are available

## TYPICAL APPLICATIONS



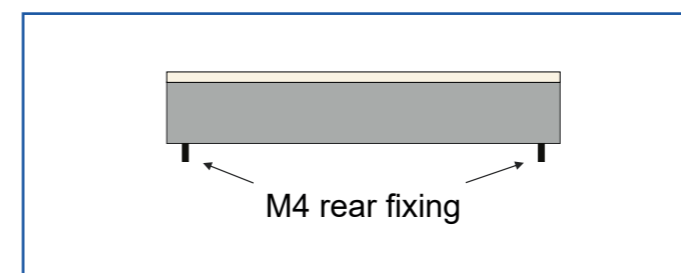
## MODELS EXAMPLES

	Code	Description	Price
Base model	GERE2020-6K	Backlight 20x20cm White 6000K Opaline cover 720mA 8000 cd/m2 17,0W 2Mt cable 2 Wires	420 €
Example	GERE4040-850-S	Backlight 40x40cm IR 850nm Opaline cover 2A 50W 2Mt cable 3 poles + logic start	995 €
Example	GERE12080-6K-RA10	Backlight 120x80cm 6000K Opaline cover analog regulation 0-10V 13A 312W 2Mt cable 3 poles	5080 €

## MECHANICAL DRAWING

	XXX	C
UP TO GERE2010		25
UP TO GERE2020		30
UP TO GERE6060		45
GEREAABB	XXX	

## FIXING



GH



24 Vdc

IP65 Protection Degree

Ex. Code : **GHAAXBB**-YYY-CCC-WW1-WW2

AAXB	Lengths	Heights
Thickness 12 mm		
GH29X24	2,9 cm	2,4 cm
GH50X36	5 cm	3,6 cm
GH60X42	6 cm	4,2 cm
GH94x42	9,4 cm	4,2 cm
GH94X80	9,4 cm	80 cm
GH124X116	12,4 cm	11,6 cm
Thickness 26 mm		
GH60X60	6 cm	6 cm
GH120X60	12 cm	6 cm
GH180X60	18 cm	6 cm
GH120X120	12 cm	12 cm
GH180X120	18 cm	12 cm
GH180X180	18 cm	18 cm
GH300X180	30 cm	18 cm
GH300X300	30 cm	30 cm
GH420X300	42 cm	30 cm
GH420X420	42 cm	42 cm
GHAABB	from 5 cm to 100 cm on demand	

-YYY	Led Colours
-6K	Base 6000K Cold White
-4K	4000K Natural White
-405	UV 405 nm
-RGB	RGB
-450	450 nm Royal Blue
-524	524 nm Green
-625	625 nm Red
-660	660 nm Deep Red
-730	730 nm IR
-850	850 nm IR
-950	950 nm IR
-1050	1050 nm SWIR
-1200	1200 nm SWIR
-1300	1300 nm SWIR
-1450	1450 nm SWIR
-1550	1550 nm SWIR
-YYY	Colour on demand

-CCC	Powers
	Base 25 mA per led GH model 12mm
	Base 30 mA per led GH model 26mm
-CC	Current Control
-15	15 mA per led
-100	100 mA per led
-300	300 mA per led
-CCC	Current on demand

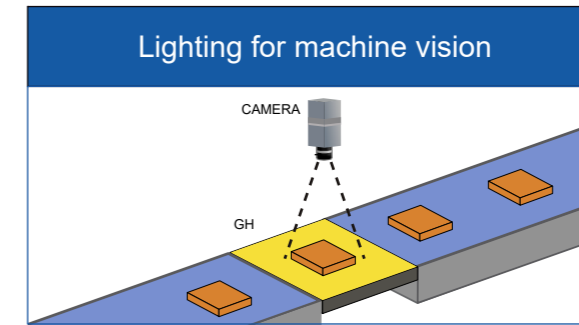
-WW1	Cover variants
	Base Opaline cover
-T	Transparent cover
-OPC	Collimating filter + Opaline cover
-TP	Polarizing filter + Transparent cover
-OPP	Polarizing filter + Opaline cover
-WW1	Cover on demand

-WW2	Cables
	Base 2 Mt cable 2 wires
-M8	20 cm cable + M8 3P M
-M12	20 cm cable + M12 5P M
-S	2 Mt cable + logic start
-M8S	20 cm cable + M8 3P M + logic start
-M12S	20 cm cable + M12 5P M + logic start
-5M	5 Mt 2P cable
-5MS	5 Mt 3P cable + logic start
-WW2	Supply connection on demand

Cable extensions for M8 and M12: page 60

Not all combinations are available

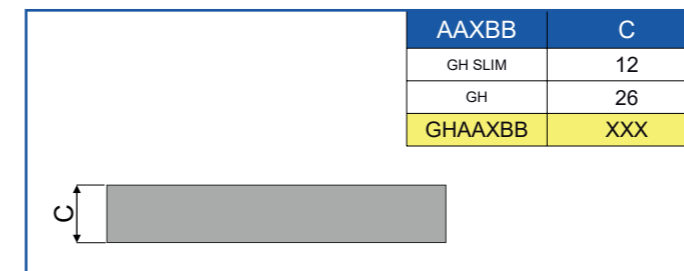
TYPICAL APPLICATIONS



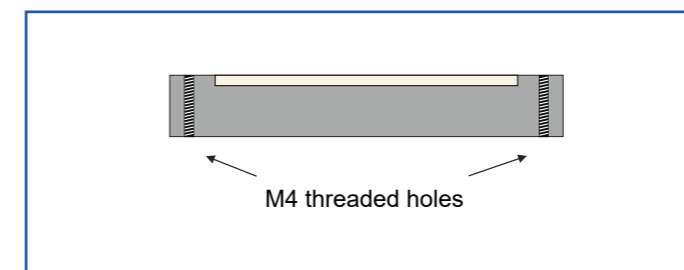
MODELS EXAMPLES

	Code	Description	Price
Base model	GH94X42-6K	Backlight 94x42mm h 12mm 6000K Opaline cover 900Lm 250mA 6,0W 2Mt cable 2 Wires	475 €
Example	GH190X100-6K	Backlight 190x100 mm h 25mm 6000K 300mA 7,2W 2Mt cable 2 Wires	680 €
Example	GH180X180-625-M12S	Backlight 180x180mm h 26mm Red 625nm Opaline cover 1,08A 26W 20cm M12 5 poles cable + logic start	1600 €

MECHANICAL DRAWING



FIXING



GZ



24 Vdc

IP67  
Protection Degree

Stainless Steel  
IP69K  
Protection Degree

Optional  
IO-Link  
External controller

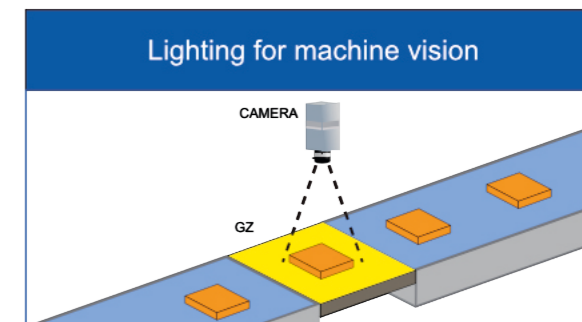
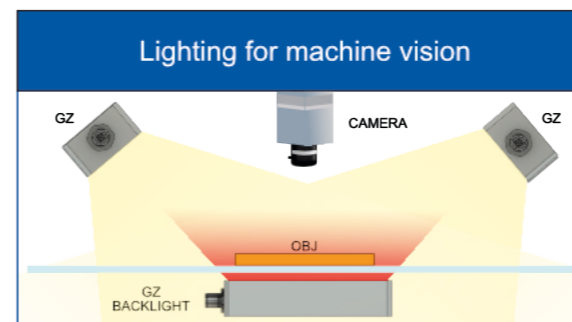
Ex. Code : **GZXXX**-RGRAYW-CCC-WW1-WW2

XXX	Lengths	Heights	-CCC	Powers	-WW1	Cover variants	-WW2	Cables
GZXXX	30 mm	45 mm		Base 60 mA per led		Base Opaline cover	-1	Panel mount connector M12 5P M + logic start
	30 mm	90 mm	- 700	Pulse 700 mA per led	-ST	Satin cover	-WW2	Supply connection on demand
	30 mm	180 mm	-CCC	Current on demand	-T	Transparent cover		
	60 mm	90 mm			-X69K	Stainless Steel IP69K		
	90 mm	90 mm			-WW1	Cover on demand		
	60 mm	180 mm						
	90 mm	180 mm						
	120 mm	135 mm						
180 mm	180 mm							
MODELXXX	Dimensions on demand							

Cable extensions for M12: page 60

Not all combinations are available

## TYPICAL APPLICATIONS



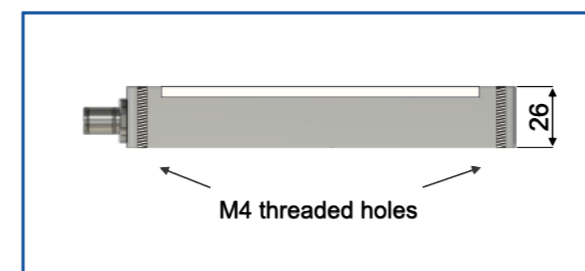
## MODELS EXAMPLES

	Code	Description	Price
Base model	GZ3045-RGRAYW-1	Backlight 30x45mm 6 led x 5 colors single color continue use Opaline cover 60mA 1,4W M12 M 5P	350 €
Base model	GZ9090-RGRAYW-700-1	Backlight 90x90mm 36 led x 5 colors single color continue use Opaline cover 360mA 9W M12 M 5P	830 €
Example	GZ60135-RGRAYW-1	Backlight 60x135mm 36 led x 5 colors single color continue use Opaline cover 360mA 9W M12 M 5P	780 €
Example	GZ180180-RGRAYW-700-1	Backlight 180x180mm 144 led x 5 colors single color Pulse use DT 10% 1ms max Opaline cover 16,8A (4A PSU + Cap) 403W M12 M 5P	2160 €

## CONNECTION



## FIXING



**NEW SOLUTION**  
DESIGN A NEW ONE  
info@genesi-lux.it



**SAMPLE**  
TEST THE PRODUCT  
info@genesi-lux.it



**DOWNLOAD**  
TECHNICAL SPECIFICATIONS  
www.genesi-elettronica.com



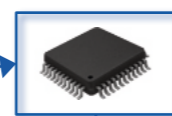
**REQUEST**  
THE PRICE LIST  
info@genesi-lux.it

# GB - GENESI BACKLIGHT

Blue Line



- 24 Vdc
- IP65 Protection Degree
- Stainless Steel IP69K Protection Degree



Internal controller with 4 Driving modes	
1	100% Continuous use
2	200% Semi-continuous use
3	270% Strobe use
4	10-100% Analog Reg.

Ex. Code : **GBAAABBB** -**YYY** -**WW1** -**WW2**

AAABBB	Lengths	Heights
Thickness 26 mm		
GB060060	6 cm	6 cm
GB060120	6 cm	12 cm
GB060180	6 cm	18 cm
GB060240	6 cm	24 cm
GB120120	12 cm	12 cm
GB120180	12 cm	18 cm
GB180180	18 cm	18 cm
GB180300	18 cm	30 cm
GB240240	24 cm	24 cm
GB300300	30 cm	30 cm
GB300420	30 cm	42 cm
GB420420	42 cm	42 cm
GB480480	48 cm	48 cm
GBAAABBB	From 6 cm to 100 cm on demand	

-YYY	Led Colours	
-6K	Base 6000K Cold White	White
-4K	4000K Natural White	
-405	UV 405 nm	UV - A
-RGB	RGB	Visible
-450	450 nm Royal Blue	
-524	524 nm Green	
-625	625 nm Red	
-660	660 nm Deep Red	
-730	730 nm IR	Nir
-850	850 nm IR	
-950	950 nm IR	
-1050	1050 nm SWIR	Swir
-1200	1200 nm SWIR	
-1300	1300 nm SWIR	
-1450	1450 nm SWIR	
-1550	1550 nm SWIR	
-YYY	Colour on demand	

-WW1	Cover variants
	Base Opaline cover
-X69K	Stainless Steel IP69K
-WW1	Cover on demand
-WW2	Cables
	20 cm cable + M12 5P M
-WW2	Supply connection on demand

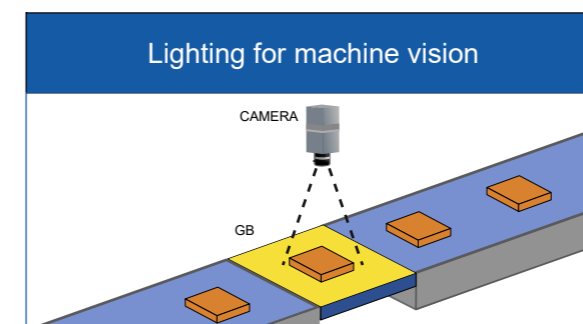
Cable extensions for M12: page 60



Stainless steel IP69K Version

Not all combinations are available

## TYPICAL APPLICATIONS



## PIN-OUT

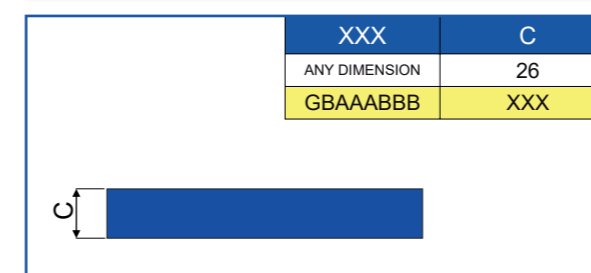


M12 5P Male Connector	
Pin 1	+24V
Pin 2	Start NPN < 1 to 0V
Pin 3	GND
Pin 4	Start PNP > 3 to 24V
Pin 5	1-10V Analog Reg.

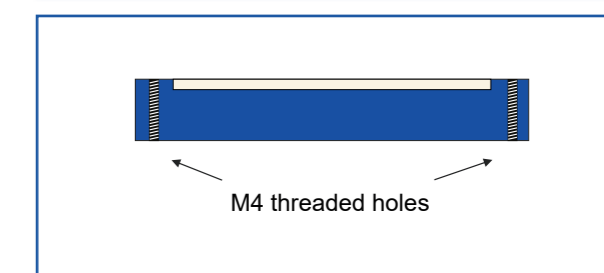
## MODELS EXAMPLES

	Code	Description	Price
Base model	GB180180-6K	Backlight 4 Driving Modes 180x180mm White 6000K Opaline cover 3900/26000Lm 1,08/7,2A 26/173W 20cm cable M12 M 5P	1820 €
Example	GB120120-524	Backlight 4 Driving Modes 120x120mm GREEN 624nm Opaline cover 0,64/3,2A 15/77W 20cm cable M12 M 5P	1239 €
Example	GB180240-1550	Backlight 4 Driving Modes 180x240mm SWIR 1550nm Opaline cover 1,44/4,8A 35/115W 20cm cable M12 M 5P	5040€

## MECHANICAL DRAWING



## FIXING



## ACCESSORIES

Code	Description
GBAAABBB-PX2-AP	Additional protection 2 mm transparent plexiglass + screws
GBAAABBB-P-AP	Additional protection 2 mm Transparent plexiglass + Polarizing Filter horizontal + screws
GBAAABBB-C-AP	Additional protection 2 mm Transparent plexiglass + Collimating Filter + screws

# GERE FLAT DOME



24 Vdc

IP40 Protection Degree

IP54 Variant Protection Degree

Ex. Code : **GEREAABB** -YYY -CCC -HH -WW1 -WW2

AABB	Lengths	Heights
GERE3030	30 cm	30 cm
GERE4030	40 cm	30 cm
GERE4040	40 cm	40 cm
GERE5020	50 cm	20 cm
GERE6020	60 cm	20 cm
GERE5050	50 cm	50 cm
GERE6060	60 cm	60 cm
GERE8080	80 cm	80 cm
GEREAABB	from 5 cm to 200 cm on demand	

-YYY	Led Colours	
-6K	Base 6000K Cold White	White
-4K	4000K Natural White	White
-365	UV 365 nm	UV - A
-385	UV 385 nm	
-395	UV 395 nm	
-405	UV 405 nm	
-RGB	RGB	Visible
-450	450 nm Royal Blue	
-524	524 nm Green	
-625	625 nm Red	
-660	660 nm Deep Red	
-730	730 nm IR	Nir
-850	850 nm IR	
-950	950 nm IR	
-YYY	Colour on demand	

-CCC	Powers	-HH	Holes for cameras
	Base 30 mA per led UP TO GERE3020	-H3	Diameter 30 mm
	Base 20 mA per led FROM GERE3030	-H4	Diameter 40 mm
-CC	Current Control	-H6	Diameter 60 mm
-100	100 mA per led	-H8	Diameter 80 mm
-CCC	Current on demand	-HH	Hole on demand

-WW1	Cover variants
	Base Opaline cover
-T	Transparent cover
-OPC	Collimating filter + Opaline cover
-TP	Polarizing filter + Transparent cover
-OPP	Polarizing filter + Opaline cover
-IP54	IP54
-WW1	Cover on demand

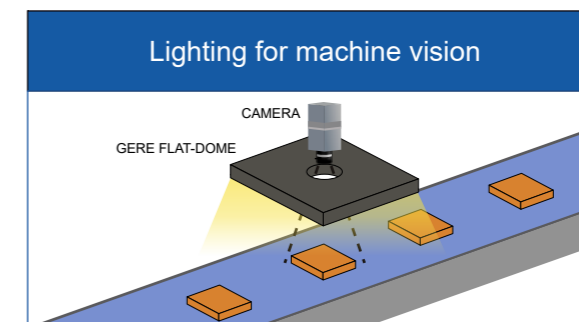
-WW2	Cables
	Base 2 Mt cable 2 wires
-M8	20 cm cable + M8 3P M
-M12	20 cm cable + M12 5P M
-S	2 Mt cable + logic start
-M8S	20 cm cable + M8 3P M + logic start
-M12S	20 cm cable + M12 5P M + logic start
-5M	5 Mt 2P cable
-5MS	5 Mt 3P cable + logic start
-WW2	Supply connection on demand

Cable extensions for M8 and M12: page 60

Up to 2 different colours in a single light

Not all combinations are available

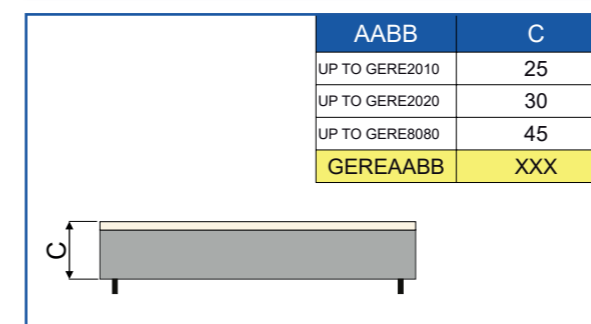
## TYPICAL APPLICATIONS



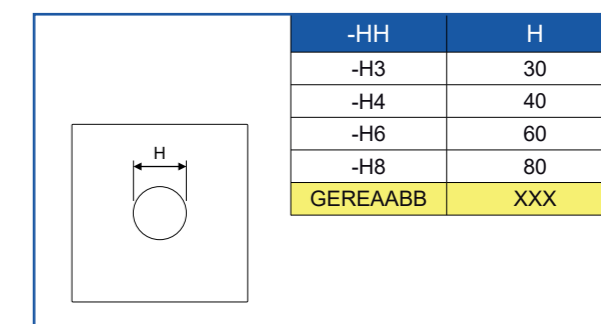
## MODELS EXAMPLES

	Code	Description	Price
Base model	GERE3030-6K-H3	Flat dome light 30x30cm White 6000K hole 30mm Opaline cover 8000cd/m2 960mA 23W 2Mt cable 2 Wires	650 €
Example	GERE4030-850-H6-M12S	Flat dome light 40x30cm IR 850nm hole 60mm Opaline cover 1,44A 34W 20cm M12 5 poles cable+ start	950 €
Example	GERE6060-6K-H6-M12	Flat dome light 60x60cm White 6000K hole 60mm Opaline cover 4,5A 107,5W 20cm M12 5 poles cable	1630 €

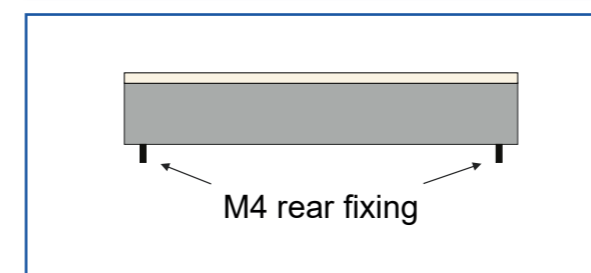
## MECHANICAL DRAWING



## CAMERA HOLE



## FIXING



**NEW SOLUTION**  
 DESIGN A NEW ONE  
 info@genesi-lux.it



**SAMPLE**  
 TEST THE PRODUCT  
 info@genesi-lux.it



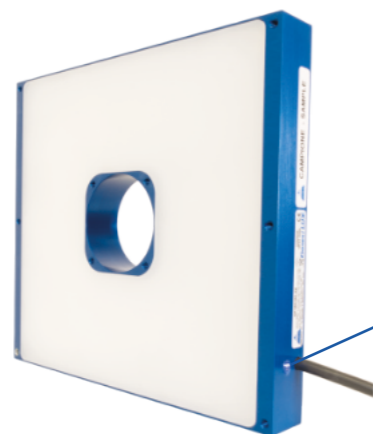
**DOWNLOAD**  
 TECHNICAL SPECIFICATIONS  
 www.genesi-elettronica.com



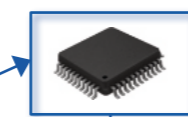
**REQUEST**  
 THE PRICE LIST  
 info@genesi-lux.it

# GF - GENESI FLAT DOME

Blue Line



24 Vdc  
IP65 Protection Degree



Internal controller with 4 Driving modes	
1	100% Continuous use
2	200% Semi-continuous use
3	270% Strobe use
4	10-100% Analog Reg.

Ex. Code : **GFAAABBB** -YYY -WW1 -WW2

AAABBB	Lengths	Heights
Thickness 26 mm		
GF180180	18 cm	18 cm
GF180300	18 cm	30 cm
GF240240	24 cm	24 cm
GF300300	30 cm	30 cm
GF300420	30 cm	42 cm
GF420420	42 cm	42 cm
GF480480	48 cm	48 cm
GFAAABBB	From 12 cm to 100 cm on demand	

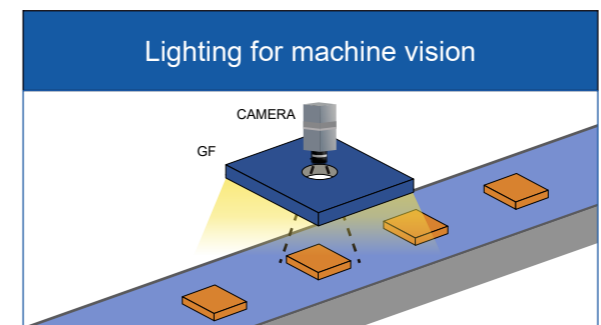
-YYY	Led Colours	
-6K	Base 6000K Cold White	White
-4K	4000K Natural White	White
-405	UV 405 nm	UV - A
-450	450 nm Royal Blue	Visible
-524	524 nm Green	
-625	625 nm Red	
-660	660 nm Deep Red	
-730	730 nm IR	Nir
-850	850 nm IR	
-950	950 nm IR	
-1050	1050 nm SWIR	
-1200	1200 nm SWIR	Swir
-1300	1300 nm SWIR	
-1450	1450 nm SWIR	
-1550	1550 nm SWIR	
-YYY	Colour on demand	

-WW1	Cover variants
	Base Opaline cover
-WW1	Cover on demand
-WW2	Cables
	20 cm cable + M12 5P M
-WW2	Supply connection on demand

Cable extensions for M12: page 60

Not all combinations are available

## TYPICAL APPLICATIONS



## PIN-OUT

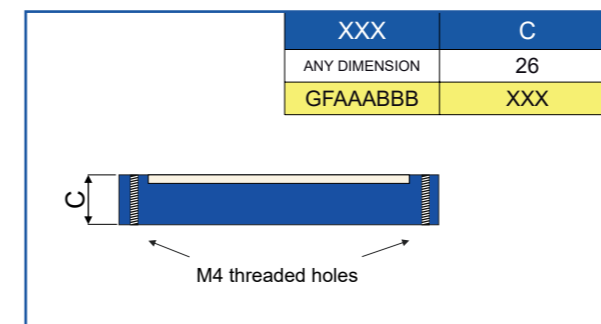


M12 5P Male Connector	
Pin 1	+24V
Pin 2	Start NPN < 1 to 0V
Pin 3	GND
Pin 4	Start PNP > 3 to 24V
Pin 5	1-10V Analog Reg.

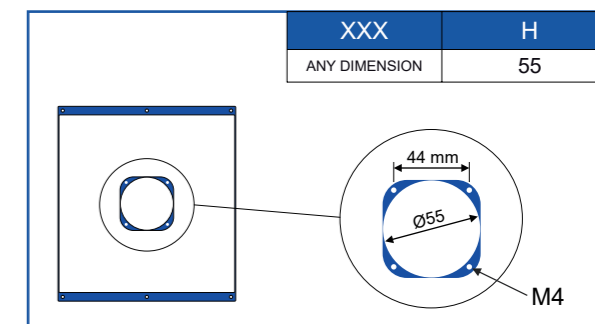
## MODELS EXAMPLES

	Code	Description	Price
Base model	GF180180-6K	Flat dome light 4 Driving Modes 180x180mm Hole 55mm White 6000K Opaline cover 3450/23100Lm 0,96/6,4A 23/154W 20cm cable M12 M 5P	1920 €
Example	GF180180-850	Flat dome light 4 Driving Modes 180x180mm Hole 55mm IR 850nm Opaline cover 0,8/2,56A 19,2/61,5W 20cm cable M12 M 5P	2110 €
Example	GF480480-625	Flat dome light 4 Driving Modes 480x480mm Hole 55mm RED 625nm Opaline cover 5,04/25,2A 121/605W 20cm cable M12 M 5P	6360 €

## MECHANICAL DRAWING



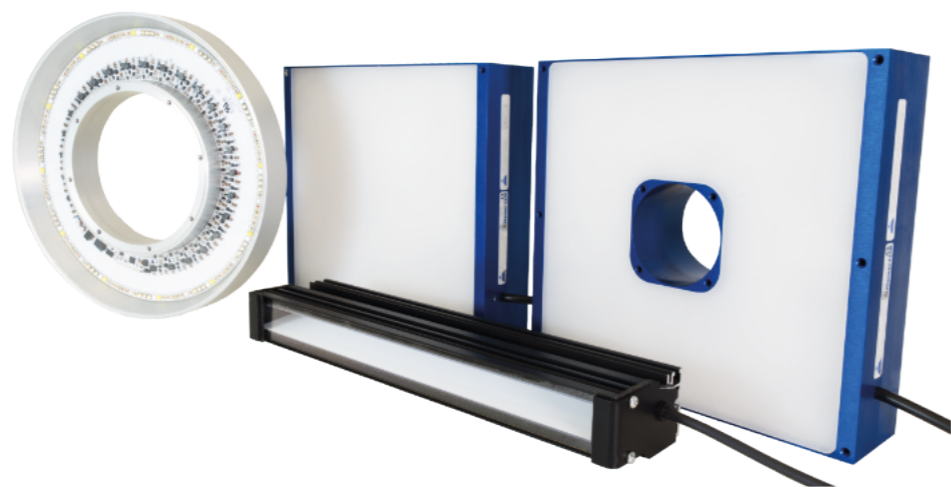
## CAMERA HOLE



## ACCESSORIES

Code	Description
GFAAABBB-PX2-AP	Additional protection 2 mm transparent plexiglass + screws
GFAAABBB-P-AP	Additional protection 2 mm Transparent plexiglass + Polarizing Filter horizontal + screws

# MULTISPECTRAL LIGHTING



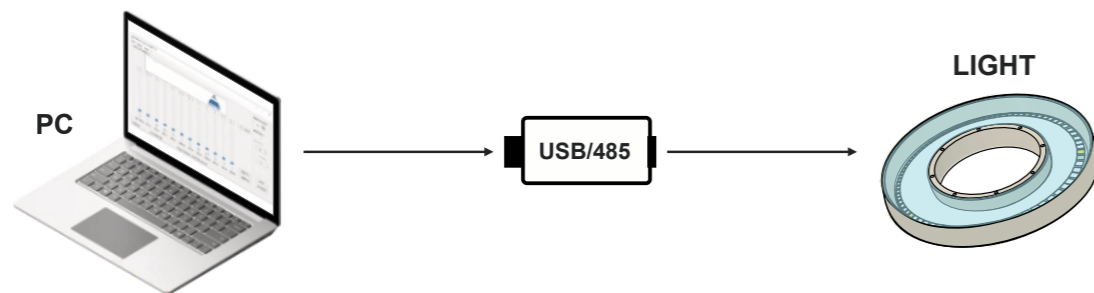
- 24 Vdc**
- IP54**  
Protection Degree  
GEVXD
- IP65**  
Protection Degree  
GEST  
GB - GF

Ex. Code : **MODELXXX-MS-YYY-ZZZ**

XXX	Base Length	
	Bar Light	
GEVXD28	28 cm	
XXX	Base Diameter	
	Ring Light	
GEST220	22 cm	
XXX	Lengths	Heights
	Backlight	
GB210280	21 cm	28 cm
	Flat Dome	
GF300300	30 cm	30 cm
MODELXXX	Dimensions on demand	

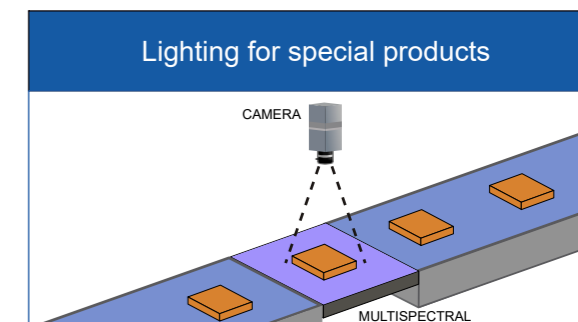
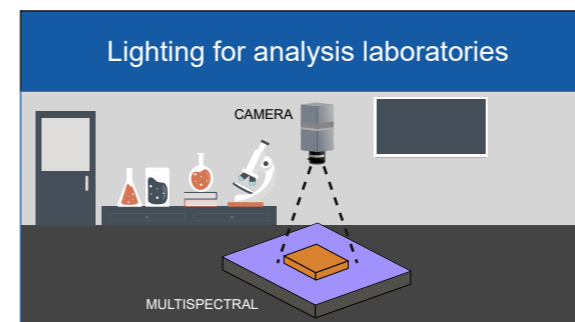
-YYY-ZZZ	TABLES
-400-1650	Base TABLE 1
-365-980	Base TABLE 2
-RGB-1550	Base TABLE 3
-400-1900	Base TABLE 4
-265-450	Base TABLE 5
-255-450	Base TABLE 6
-YYY-ZZZ	Table on demand

**12 WAVELENGTHS**  
You can turn on a single wavelength or a combination of them



Not all combinations are available

## TYPICAL APPLICATIONS



## MODELS EXAMPLES

	Code	Description	Price
Base model	GEVXD28-MS-400-1650	12 Wavelengths Multispectral lighting 28cm Lens 5° 400-1650nm 50W 20cm cable M12 5 poles Table 1	3100 €
Base model	GEST220-MS-365-980	12 Wavelengths Multispectral Ring light 220cm diameter 365-980nm 100W 20cm cable M12 5 poles Table 2	4600 €
Base model	GB210280-MS-RGB-1550	12 Wavelengths Multispectral Backlight 21x28cm 400-1650nm 150W 20cm cable M12 5 poles Table 3	8500 €
Base model	GF300300-MS-400-1900	12 Wavelengths Multispectral Flat Dome light 30x30cm 400-1650nm 200W 20cm cable M12 5 poles Table 4	11200 €
Example	GEVXD108-MS-400-1650	12 Wavelengths Multispectral lighting 108 cm 400-1650nm 200W 20cm cable M12 5 poles Table 1	9250 €
Example	GB300400-MS-400-1900	12 Wavelengths Multispectral Backlight 40x30cm 400-1900 nm 200W 20cm cable M12 5 poles Table 4	13000 €

## TABLES

LED position N°18 for each position	BASE TABLES						CUSTOM TABLE
	TABLE 1 WAVELENGTHS	TABLE 2 WAVELENGTHS	TABLE 3 WAVELENGTHS	TABLE 4 WAVELENGTHS	TABLE 5 WAVELENGTHS	TABLE 6 WAVELENGTHS	TABLE XXX WAVELENGTHS
1	400-700 nm	365 nm	450 nm	400-700 nm	265 nm	255 nm	nm
2	730 nm	385 nm	520 nm	730 nm	275 nm	265 nm	nm
3	780 nm	395 nm	625 nm	780 nm	285 nm	275 nm	nm
4	850 nm	400-700 nm	400-700 nm	850 nm	297 nm	285 nm	nm
5	940 nm	450 nm	730 nm	940 nm	308 nm	297 nm	nm
6	1050 nm	520 nm	850 nm	1050 nm	345 nm	308 nm	nm
7	1150 nm	625 nm	940 nm	1200 nm	365 nm	345 nm	nm
8	1200 nm	730 nm	1050 nm	1300 nm	385 nm	365 nm	nm
9	1300 nm	780 nm	1200 nm	1450 nm	395 nm	385 nm	nm
10	1450 nm	850 nm	1300 nm	1550 nm	405 nm	395 nm	nm
11	1550 nm	940 nm	1450 nm	1650 nm	450 nm	405 nm	nm
12	1650 nm	980 nm	1550 nm	1900 nm	400 - 700 nm	450 nm	nm



**NEW SOLUTION**  
DESIGN A NEW ONE  
[info@genesi-lux.it](mailto:info@genesi-lux.it)



**SAMPLE**  
TEST THE PRODUCT  
[info@genesi-lux.it](mailto:info@genesi-lux.it)



**DOWNLOAD**  
TECHNICAL SPECIFICATIONS  
[www.genesi-elettronica.com](http://www.genesi-elettronica.com)

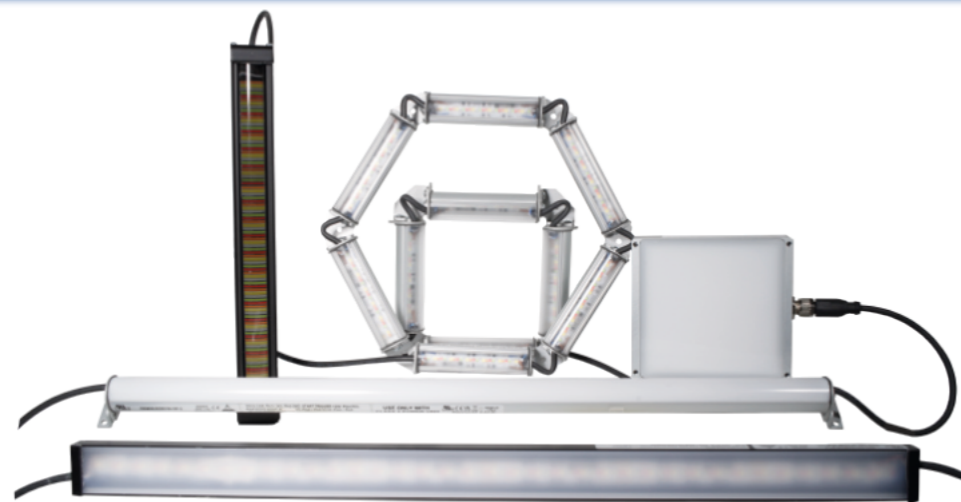


**REQUEST**  
THE PRICE LIST  
[info@genesi-lux.it](mailto:info@genesi-lux.it)

# FIVE COLORS LINE

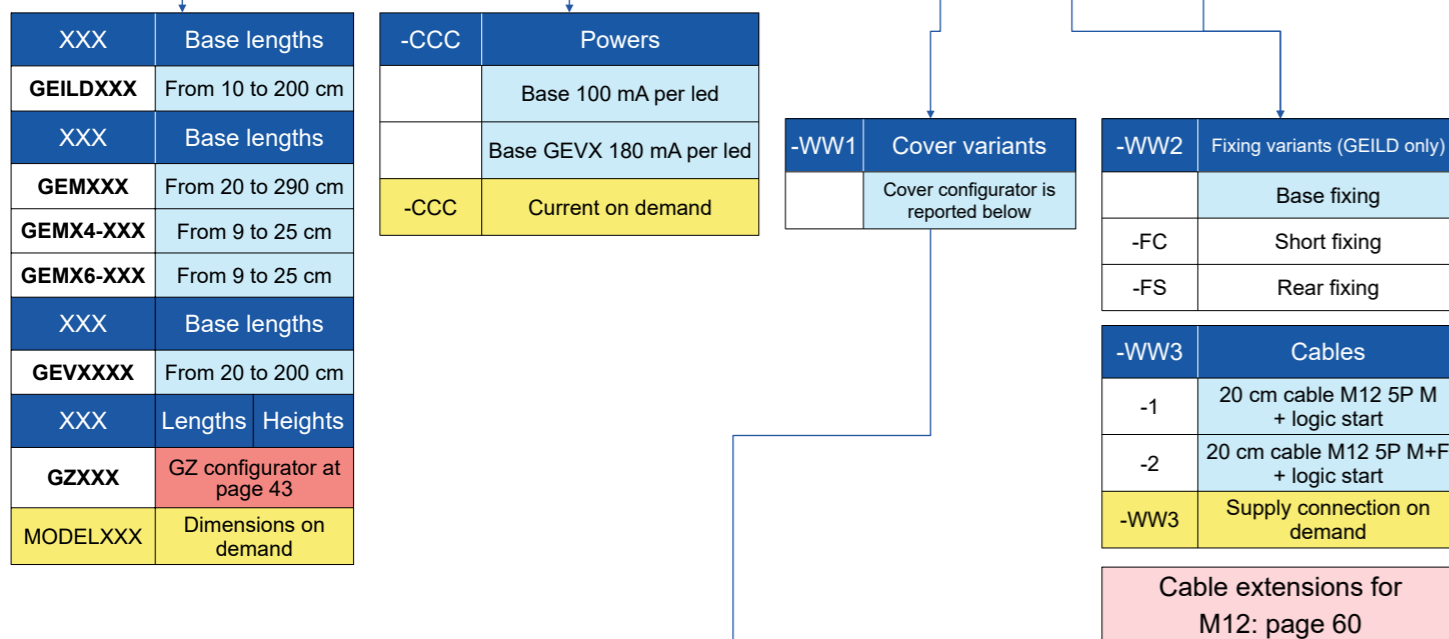


For GEILD and GEM families



- 24 Vdc**
- IP54**  
Protection Degree  
GEVX
- IP65**  
Protection Degree  
GEILD  
GEM  
GEMX4-X6
- Optional  
**IO-Link**  
External controller

Ex. Code : **MODELXXX -RGRAYW -CCC -WW1 -WW2 -WW3**

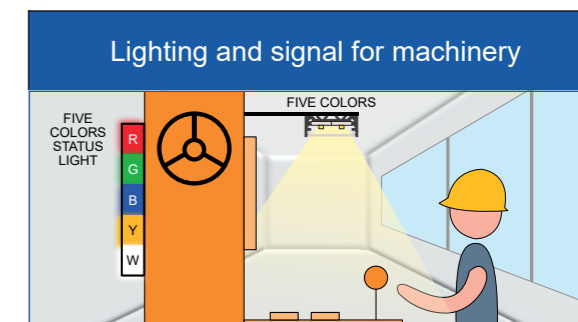
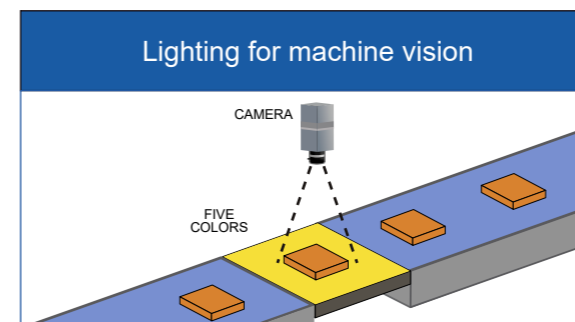


## COVER VARIANTS

-WW1	GEILD	-WW1	GEM / GEMX4-X6	-WW1	GEVX
-T	Base Transparent matte cover	-T	Base Transparent cover		Base 5° Lens cover
-ST	Base Satin cover	-OP	Base Opaline cover	-ML	12° ML 4° - 45° + transparent cover
-OP	Opaline cover	-L10	10° Lens	-IP65	Transparent cover - IP65
-OPB	Semi Opaline black cover	-L25	25° Lens	-WW1	Cover on demand
-WW1	Cover on demand	-WW1	Cover on demand		

Not all combinations are available

## TYPICAL APPLICATIONS



## MODELS EXAMPLES

	Code	Description	Price
Base model	GEILD10-RGRAYW-T-2	Bar light 10 cm 6 led x 5 colors single color use Transparent cover 100mA 2,4W 20cm cable M12 5P M+F 3 logic start UL	112 €
Base model	GEM28-RGRAYW-OP-2	Bar light 28 cm 18 led x 5 colors single color use Transparent cover 300mA 7,2W 20cm cable M12 5P M+F 3 logic start UL	210 €
Base model	GEMX4-18-RGRAYW-T-1	Bar light square composition 18 cm 48 led x 5 colors single color use Transparent cover 800mA 20W 20cm cable M12 5P M 3 logic start UL	790 €
Base model	GEVX34-RGRAYW-2	Bar light 34 cm 24 led x 5 colors single color use 5° Lens cover cover 720mA 18W 20cm cable M12 5P M+F 3 logic start	430 €
Example	GEILD76-RGRAYW-ST-1	bar light 76 cm 54 led x 5 colors single color use Satin PC cover 900mA 22W 20cm cable M12 5P M 3 logic start UL	450 €
Example	GEVX150-RGRAYW-ML-1	bar light 150 cm 108 led x 5 colors single color use 12° multi-lens (4°-45°) cover 3,2A 78W 20cm cable M12 5P M 3 logic start	1440 €

## CABLES

Five Colors bar with only M12 5P input cable (-1 configuration code)



Five Colors bar with M12 5P I/O cables (-2 configuration code)



Daisy chain power up to 2 m for GEVX model and 3.2 m for GEILD and GEM model

# IMB



24 Vdc

IP65 Protection Degree

Optional EtherNET External controller

Optional EtherCAT External controller

Optional IO-Link External controller

Ex. Code : **IMBXXX** -**YYY** -**WW1** -**WW2**

XXX	RGB Base Lengths
IMB25	25 cm
IMB50	50 cm
IMB100	100 cm
IMB200	200 cm
IMB300	300 cm
IMB400	400 cm
IMBXXX	from 25 cm to 1600* cm on demand

-YYY	Led Colours
-RGB	RGB 10 mm STEP Visible

-WW1	IMB Cover variants
-OP	Base Opaline cover
-T	Base Transparent cover
-ST	Satin cover
-OPB	Black opaline cover
-WW1	Cover on demand

-WW2	IMB Fixing variants
-US	Base Rear cable + rear fixing
-UL	Side cable + rear fixing
-UA	Axial cable + base fixing
-WW2	Fixing variants on demand

XXX	RGBHD Base Lengths
IMB20	20 cm
IMB40	40 cm
IMB100	100 cm
IMB200	200 cm
IMBXXX	from 20 cm to 400 cm on demand

-YYY	Led Colours
-RGBHD	RGBHD 4 mm STEP Visible

-WW1	IMB-SPOT Cover variants
-T	Base Transparent cover
-L10	10° lens + transparent cover
-L30	30° lens + transparent cover
-L60	60° lens + transparent cover
-WW1	Cover on demand

IMB-SPOT	Base Lengths
IMB-SPOT	19 cm
IMBXXX	Dimensions on demand

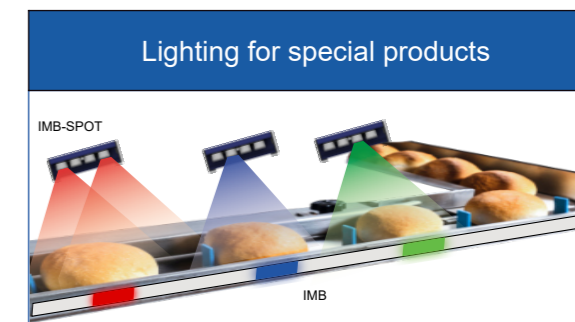
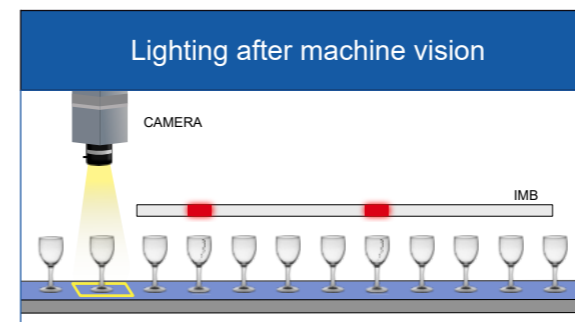
-YYY	Led Colours
-WRGW	W R G W Visible
-RGBR	R G B R Visible
-BRGB	B R G B Visible
-GRBG	G R B G Visible

\*The maximum length is 16Mt with modular parts whose maximum length is 4Mt.

Not all combinations are available

Cable extensions for M12: page 60

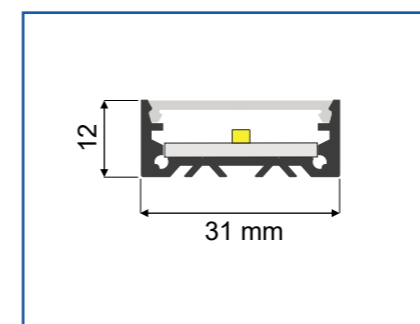
## TYPICAL APPLICATIONS



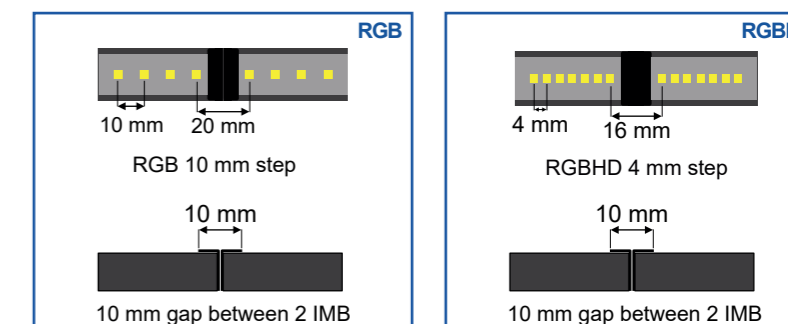
## MODELS EXAMPLES

	Code	Description	Price
Base model	IMB100-RGB-T-US	Industrial metric bar light 100cm RGB transparent cover 1A 24W Rear fixing & cable 20cm M12 5P M + F	400 €
Base model	IMB40-RGBHD-T-US	Industrial metric bar light 40 cm RGBHD Transparent cover 0,4A 10W Rear fixing & cable 20cm M12 5P M + F	400 €
Base model	IMB-SPOT-WRGW-T	Industrial metric bar light SPOT 120° White-Red-Green-White transparent cover 0,4A 9W cable 20cm M12 5P M + F	370 €
Example	IMB400-RGB-T-UA	Industrial metric bar light 400cm RGB Trasparent cover 4A 96W Front fixing & cable 20cm M12 5P M + F	1480 €
Example	IMB100-RGBHD-OP-UA	Industrial metric bar light 100cm RGBHD opaline cover 1A 24W Front fixing & cable 20cm M12 5P M + F	950 €

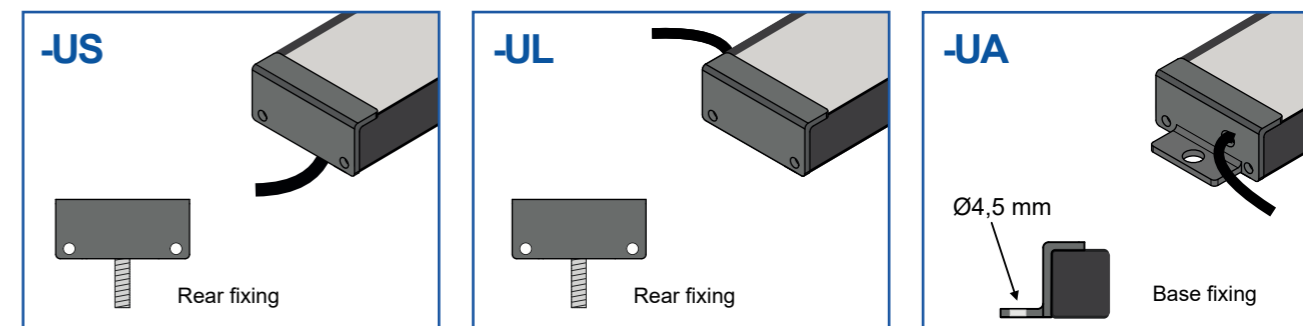
## MECHANICAL DRAWING



## LEDs PLACEMENT



## FIXING



## INTERNAL CONTROLLER

All Genesi range of solutions have a trigger as a logical driving option, for example: S, M8S, M12S. They enable the lighting with a trigger from 15 to 24 V.

The new generations of Genesi solutions which have been introduced lately (GP, GEST Mega-Ring, GB, GF and GS) have an internal controller that allows to have 4 driving modes and ensures the monitoring of the safety time and temperature.

### Internal Controller with 4 Driving modes


1	100% Continuous use
2	200% Semi-continuous use
3	400% Strobe use
4	10-100% Analog Reg

Some of our solutions are equipped with an **Internal Controller with four Driving modes.**


← Find this table in the related products pages.

## EXTERNAL CONTROLLERS


### DIMMER PWM HUMAN VISION ONLY, NOT RECOMMENDED FOR MACHINE VISION

	Code	Description	Price
	-AS5-DIM1	Dimmer 1 way Controller -AS5-DIM1 to be integrated into another product. Human vision only, not recommended for machine vision	60 €
	-AS5-DIM2	Dimmer 2 way Controller -AS5-DIM2 to be integrated into another product. Human vision only, not recommended for machine vision	60 €


### STROBE CONTROLLER

	Code	Description	Price
	-AS5-10%	Strobe Voltage Controller -AS5 DT max 10% (200mS average) to be integrated into another product	60 €
	GEIL10-AS5-10%-M8	Strobe Voltage Controller GEIL10 & AS5 max 3A DT max 10% (200mS average) 20cm M8 3 p M/F	110 €
	GEIL10-AS5-10%-M12	Strobe Voltage Controller GEIL10 & AS5 max 5A DT max 10% (200mS average) 20cm M12 5 p M/F	120 €

### STROBE CONTROLLER WITH BUFFER

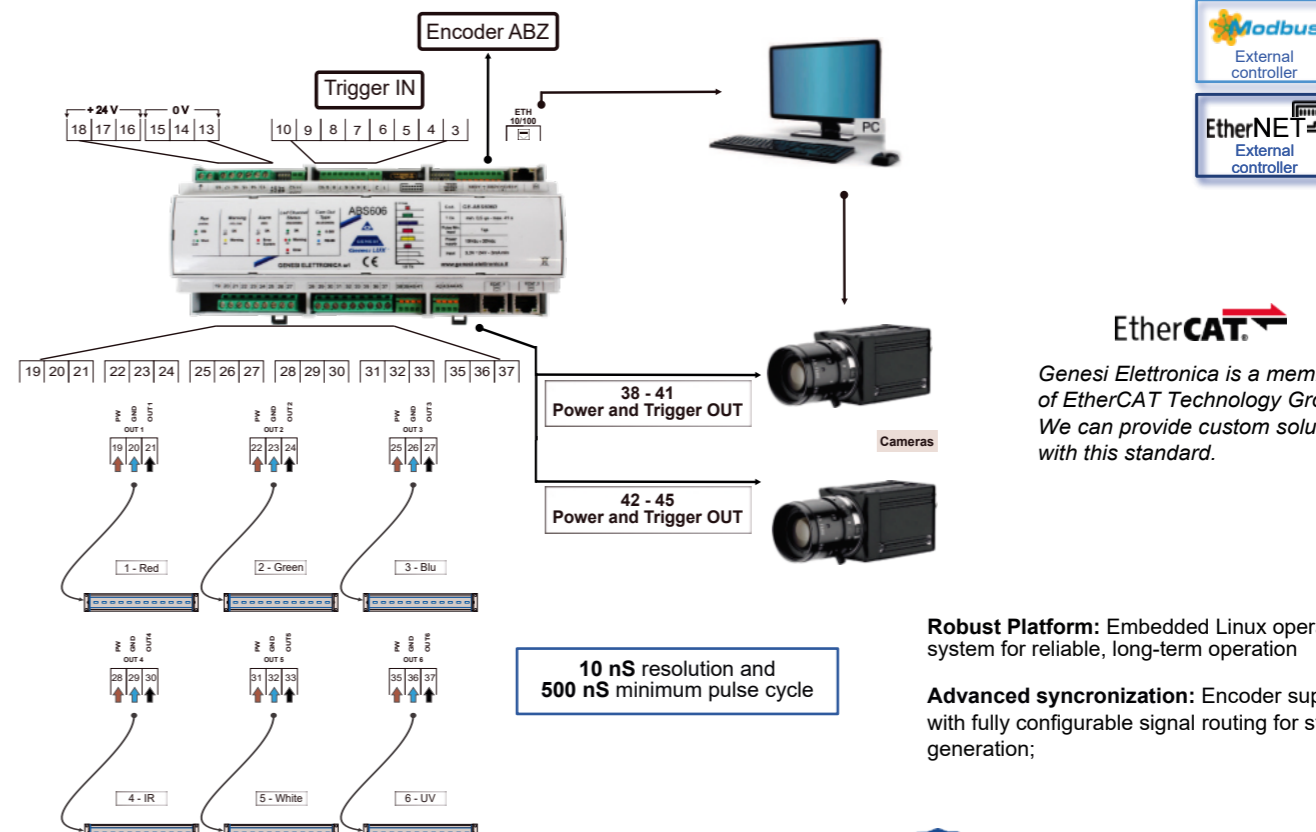
	Code	Description	Price
	GE-ABS50-10X-20	Strobe Voltage Controller, Buffer 50A /1ms 24Vdc, DT max 10% (200mS average) Max cycle freq. 10Khz	260 €
	GE-ABS50-10X-OPT	Strobe Voltage Controller, Buffer 50A /1ms 24Vdc, DT max 10% (200mS average) opto isolated input, Max cycle freq. 10Khz	280 €
	GE-ABS80B-10X-20	Strobe Voltage Controller, Buffer 80A /1ms 24Vdc, DT max 10% (200mS average) opto isolated input, Max cycle freq. 10Khz	390 €

## PROGRAMMABLE VOLTAGE CONTROLLER

	Code	Description	Price
	GE-ABS604E	4 channels Strobe Voltage Controller, Buffer 60A /1ms 24Vdc Programmable ETH, Max cycle freq. 34Khz	850 €
	GE-ABS606C-E	6+1 channels Strobe Voltage Controller, Buffer 60A /1ms 24Vdc Programmable ETH, Max cycle freq. over 500Khz	1380 €
	GE-ABS606D-E	6+2 channels Strobe Voltage Controller, Buffer 60A /1ms 24Vdc Programmable ETH, Max cycle freq. over 1Mhz	1460 €
	GE-ABS606D-CAT	6+2 channels Strobe Voltage Controller, Buffer 60A /1ms 24Vdc Programmable Ethercat, Max cycle freq. over 1Mhz	1660 €

### GE-ABS606D MAIN FEATURES AND OPTIONS

- Camera controller for industrial lighting to drive up to 6 LED lights and 2 channel for the camera;
- Max 20A per LED channel (total output current: max 60A);
- Advanced web interface configuration;



**EtherCAT**  
External controller

**Modbus**  
External controller

**EtherNET**  
External controller

**EtherCAT**  
Genesi Elettronica is a member of EtherCAT Technology Group. We can provide custom solutions with this standard.

**Robust Platform:** Embedded Linux operating system for reliable, long-term operation

**Advanced synchronization:** Encoder support with fully configurable signal routing for strobe generation;

**PATENTED**

FPGA system to control high speed illuminators, NANODIMMER function.


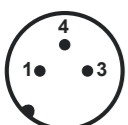

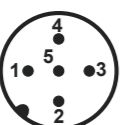




### I/O CONVERTER

Converter	Code	Description	Price
RS485 converter	GE-RS485X2-ETH	Interface Module: ETH / 2 x RS485 24V 0,4 A for Industrial Metric Bar light and more	190 €
RS485 converter	GE-RS485X2-ECAT	Interface Module: Ethercat / 2 x RS485 24V 0,4 A for Industrial Metric Bar light and more	240 €
IO-Link converter	GE-4OUT-IO-LINK	Interface Module: IO-LINK 4 Digital Output 2A 24V for Bar light and more	140 €
IO-Link converter	GE-R485-IO-LINK	Interface Module: IO-LINK 1x RS485 24V 0,4 A for Industrial Metric Bar light and more	210 €
IO-Link converter	GE-4OUT-R485-IO-LINK	Interface Module: IO-LINK 4 Digital Output 2A 24V for Bar light and more + 1x RS485 24V 0,4 A for Industrial Metric Bar light and more	250 €

## CABLES TO BE ADDED TO THE CODE

Code	Description	Price
 COD.XXX-YY-WW- <b>M8</b>	20cm PVC cable + M8 3 P M	9 €
COD.XXX-YY-WW- <b>M8S</b>	20cm PVC cable + M8 3 P M + Logic start	15 €
 COD.XXX-YY-WW- <b>M12</b>	20cm PVC cable + M12 5 P M	10 €
COD.XXX-YY-WW- <b>M12S</b>	20cm PVC cable + M12 5 P M + Logic start	16 €
 COD.XXX-YY-WW- <b>S</b>	2Mt cable 3 P + Logic start	8 €
 COD.XXX-YY-WW- <b>5M</b>	5Mt cable 2 P	7 €
 COD.XXX-YY-WW- <b>5MS</b>	5Mt cable 3 P + Logic start	9 €
 COD.XXX-YY-WW- <b>10M</b>	10Mt cable 2 P	14 €
 COD.XXX-YY-WW- <b>10MS</b>	10Mt cable 3 P + Logic start	18 €
 COD.XXX-YY-WW- <b>70N</b>	70cm PVC cable + Mate-N-LOK 6P M ( 1-480704-0 ) 5 wire	22 €

## PIN OUT

-M8 / -M8S	-M12 / -M12S	-5M / -10M																																																																																				
  <table border="1"> <thead> <tr> <th colspan="2">M8 - Male 3 Poles</th> </tr> </thead> <tbody> <tr><td>1</td><td>+24 V</td></tr> <tr><td>3</td><td>GND</td></tr> <tr><td>4</td><td>NC</td></tr> </tbody> </table> <table border="1"> <thead> <tr> <th colspan="2">M8S - Male 3 Poles</th> </tr> </thead> <tbody> <tr><td>1</td><td>+24 V</td></tr> <tr><td>3</td><td>GND</td></tr> <tr><td>4</td><td>Start</td></tr> </tbody> </table>	M8 - Male 3 Poles		1	+24 V	3	GND	4	NC	M8S - Male 3 Poles		1	+24 V	3	GND	4	Start	  <table border="1"> <thead> <tr> <th colspan="2">Under 4 A</th> <th colspan="2">Over 4 A</th> </tr> <tr> <th colspan="2">M12 - Male 5 Poles</th> <th colspan="2">M12 - Male 5 Poles</th> </tr> </thead> <tbody> <tr><td>1</td><td>+24 V</td><td>1</td><td>+24 V</td></tr> <tr><td>2</td><td>NC</td><td>2</td><td>+24 V</td></tr> <tr><td>3</td><td>GND</td><td>3</td><td>GND</td></tr> <tr><td>4</td><td>NC</td><td>4</td><td>NC</td></tr> <tr><td>5</td><td>NC</td><td>5</td><td>GND</td></tr> </tbody> </table> <table border="1"> <thead> <tr> <th colspan="2">Under 4 A</th> <th colspan="2">Over 4 A</th> </tr> <tr> <th colspan="2">M12S - Male 5 Poles</th> <th colspan="2">M12S - Male 5 Poles</th> </tr> </thead> <tbody> <tr><td>1</td><td>+24 V</td><td>1</td><td>+24 V</td></tr> <tr><td>2</td><td>NC</td><td>2</td><td>+24 V</td></tr> <tr><td>3</td><td>GND</td><td>3</td><td>GND</td></tr> <tr><td>4</td><td>Start PNP</td><td>4</td><td>Start PNP</td></tr> <tr><td>5</td><td>NC</td><td>5</td><td>GND</td></tr> </tbody> </table>	Under 4 A		Over 4 A		M12 - Male 5 Poles		M12 - Male 5 Poles		1	+24 V	1	+24 V	2	NC	2	+24 V	3	GND	3	GND	4	NC	4	NC	5	NC	5	GND	Under 4 A		Over 4 A		M12S - Male 5 Poles		M12S - Male 5 Poles		1	+24 V	1	+24 V	2	NC	2	+24 V	3	GND	3	GND	4	Start PNP	4	Start PNP	5	NC	5	GND	 <p>GND (Blue) V+ (Brown)</p> <p><b>-S / -5MS / -10MS</b> Start (Black)</p>  <p>GND (Blue) V+ (Brown)</p> <p><b>70N</b></p>   <table border="1"> <thead> <tr> <th colspan="2">70N - Male 6 poles</th> </tr> </thead> <tbody> <tr><td>1</td><td>+24 V</td></tr> <tr><td>2</td><td>Start color 1</td></tr> <tr><td>3</td><td>Start color 2</td></tr> <tr><td>4</td><td>Start color 3</td></tr> <tr><td>5</td><td>GND</td></tr> </tbody> </table>	70N - Male 6 poles		1	+24 V	2	Start color 1	3	Start color 2	4	Start color 3	5	GND
M8 - Male 3 Poles																																																																																						
1	+24 V																																																																																					
3	GND																																																																																					
4	NC																																																																																					
M8S - Male 3 Poles																																																																																						
1	+24 V																																																																																					
3	GND																																																																																					
4	Start																																																																																					
Under 4 A		Over 4 A																																																																																				
M12 - Male 5 Poles		M12 - Male 5 Poles																																																																																				
1	+24 V	1	+24 V																																																																																			
2	NC	2	+24 V																																																																																			
3	GND	3	GND																																																																																			
4	NC	4	NC																																																																																			
5	NC	5	GND																																																																																			
Under 4 A		Over 4 A																																																																																				
M12S - Male 5 Poles		M12S - Male 5 Poles																																																																																				
1	+24 V	1	+24 V																																																																																			
2	NC	2	+24 V																																																																																			
3	GND	3	GND																																																																																			
4	Start PNP	4	Start PNP																																																																																			
5	NC	5	GND																																																																																			
70N - Male 6 poles																																																																																						
1	+24 V																																																																																					
2	Start color 1																																																																																					
3	Start color 2																																																																																					
4	Start color 3																																																																																					
5	GND																																																																																					

## FEMALE EXTENSION CABLES

Code	Description	Price
 GE-M8F-3X035-2M	Female extension PVC Cable 3P 2 Mt 0,35mm2 + M8 3P Female	13 €
GE-M8F-3X035-5M	Female extension PVC Cable 3P 5 Mt 0,35mm2 + M8 3P Female	22 €
GE-M8F-3X035-10M	Female extension PVC Cable 3P 10 Mt 0,35mm2 + M8 3P Female	32 €
 GE-M12F-5X050-2M	Female extension PVC Cable 5P 2 Mt 0,5mm2 + M12 5P Female	14 €
GE-M12F-5X050-5M	Female extension PVC Cable 5P 5 Mt 0,5mm2 + M12 5P Female	24 €
GE-M12F-5X050-10M	Female extension PVC Cable 5P 10 Mt 0,5mm2 + M12 5P Female	35 €
 GE-M12F-8X020-2M	Female extension PVC Cable 8P 2 Mt 0,2mm2 + M12 8P Female	42 €
 GE-70N-2X1-3x035-2M	Female extension PVC Cable 5P 2Mt 2x1 + 3x0,35mm2 + Mate-N-LOK 6P Female	18 €
GE-70N-2X1-3x035-5M	Female extension PVC Cable 5P 5Mt 2x1 + 3x0,35mm2 + Mate-N-LOK 6P Female	29 €
GE-70N-2X1-3x035-10M	Female extension PVC Cable 5P 10Mt 2x1 + 3x0,35mm2 + Mate-N-LOK 6P Female	48 €

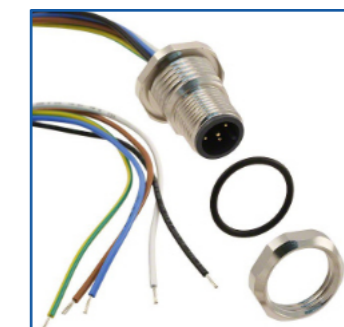
## ON REQUEST SOME EXAMPLES



M8 4 poles

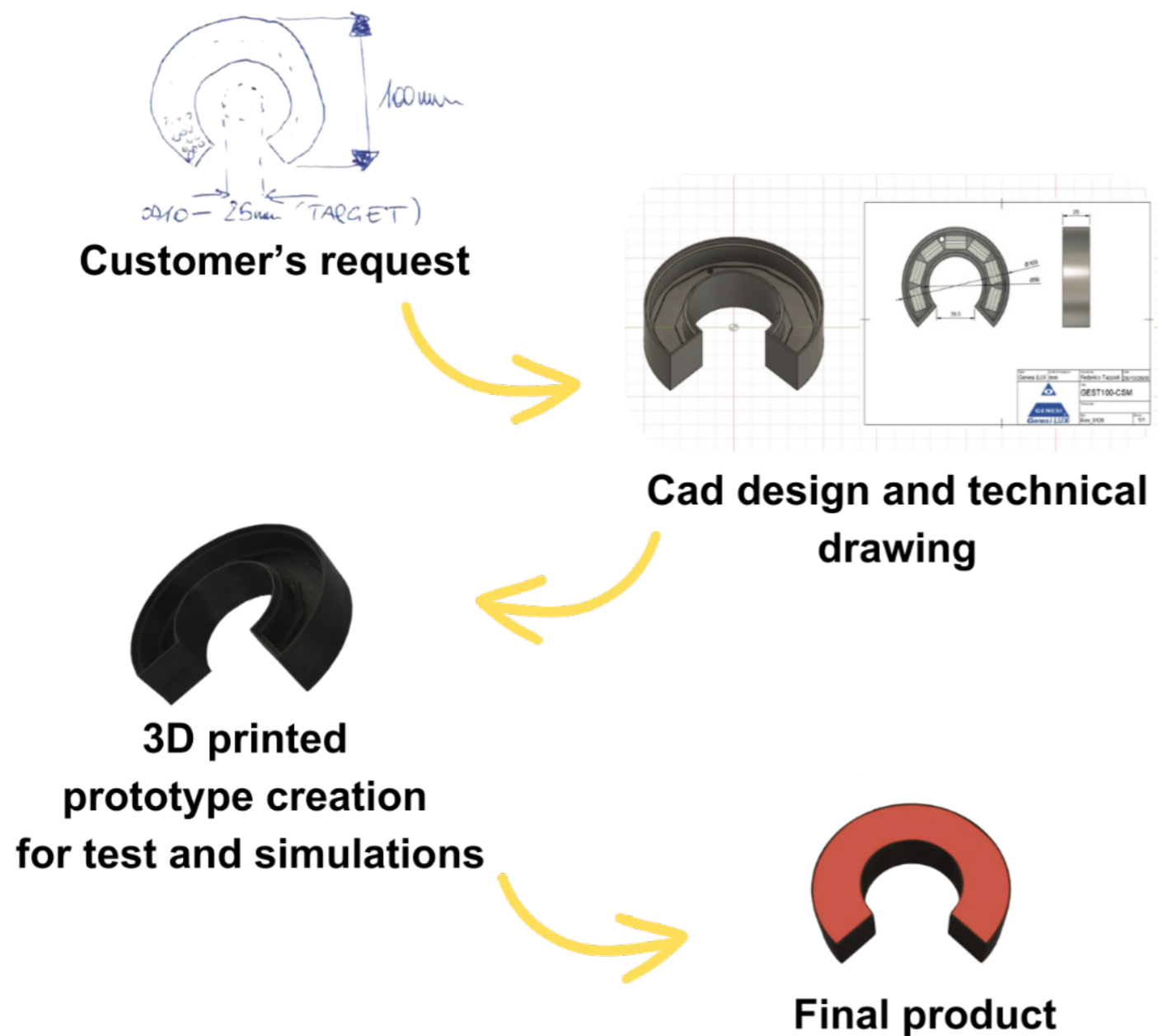


9 poles panel connector



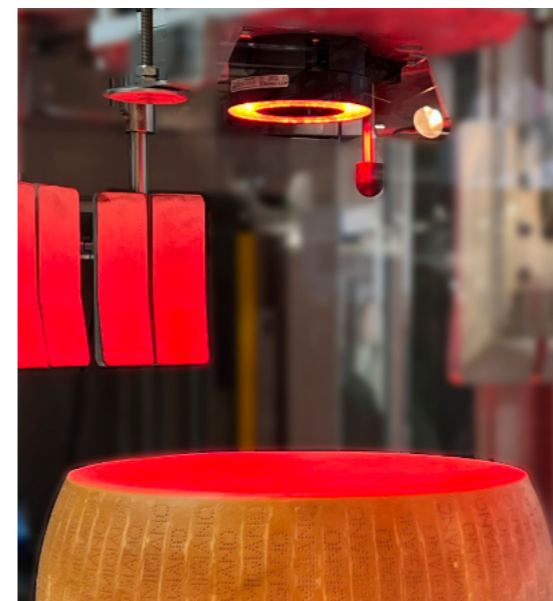
5 poles panel connector

## DESIGN PROCESS

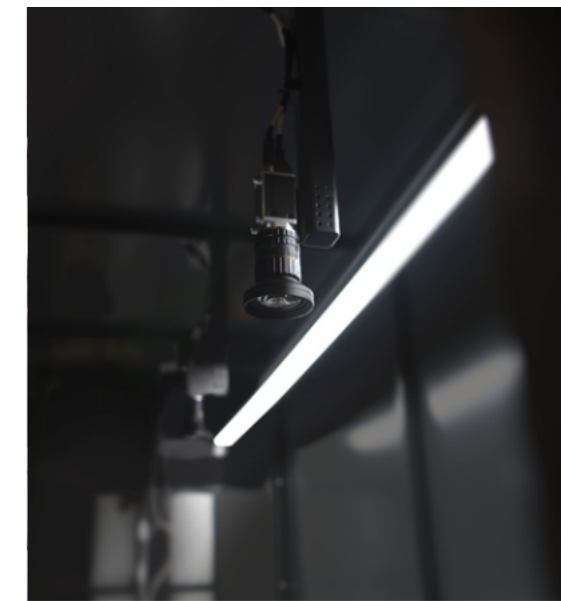


Create the perfect solution for your project with our technicians.  
Email us at: [info@genesi-lux.it](mailto:info@genesi-lux.it)

## TAILOR-MADE APPLICATIONS



**GEST122-625-T**  
FOOD & BEVERAGE



**GEL182-6K-OP-FS-S**  
MECHANICAL AUTOMATION



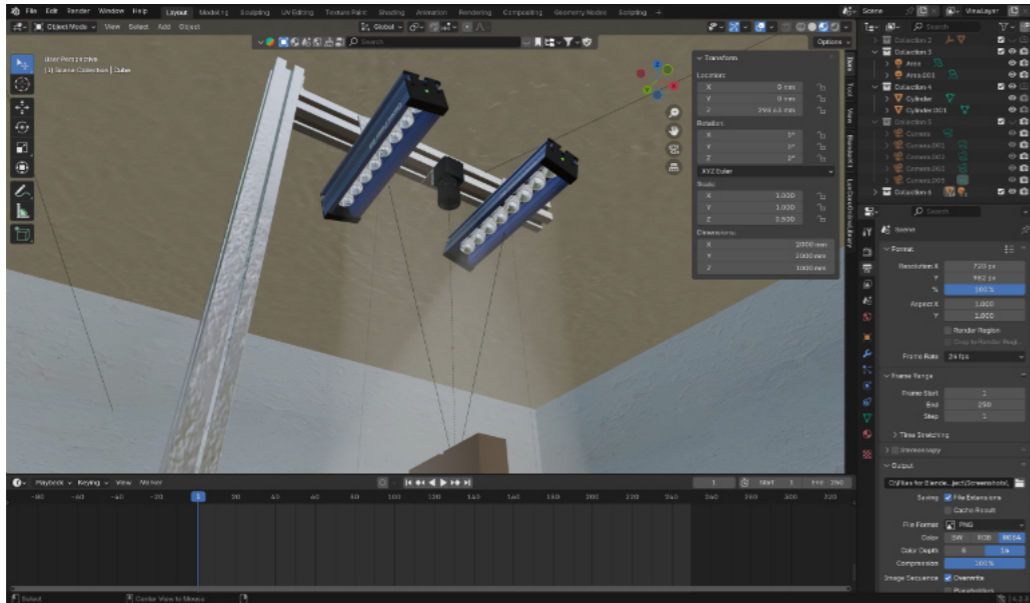
**GEST130-6K-L30**  
DEFECT DETECTION



**GEVXD28-405-TN-M12S**  
**GEVXD28-MSB-RGB-1550**  
QUALITY CONTROL

# GVS - GENESI VIRTUAL SIMULATOR

The simulation and rendering software GVS - Genesi Virtual Simulator is the latest project by Genesi Elettronica to provide its customers with further support in the development of customised LED lighting solutions and smart cameras for machine vision. Through the use of a software for virtualisation and simulation of vision systems, it will be possible to recreate systems of varying complexity from 3D CAD files of illuminator, optics, target object, smart camera, etc.



GENESI VIRTUAL SIMULATOR

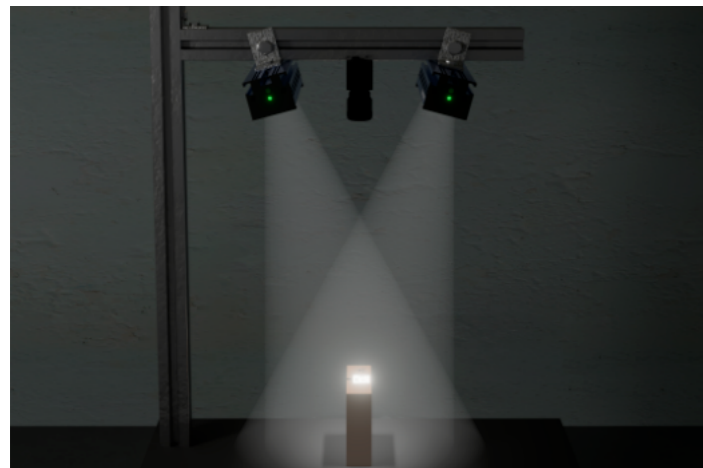


REAL SETUP

As a result, the customer, together with our team of experts, will be able to investigate the real feasibility of the project with the information provided by him, having the ability to modify its parameters, even developing systems and products that do not exist at that moment, for example a smart camera with non-standard pixel resolution and optics or an illuminator with a particular shape, power and color yet to be studied and finalised.

Upon completion of the analyses performed, the result will be twofold:

- If the simulation has passed all the tests, the product development will proceed.
- The realistic generated images will be used as a dataset to train AI algorithms.



GENESI VIRTUAL SIMULATOR

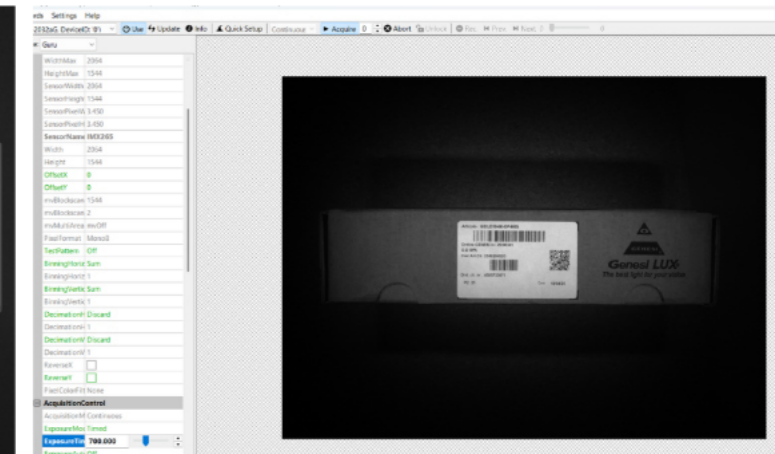


REAL SETUP

# GVS - GENESI VIRTUAL SIMULATOR



GENESI VIRTUAL SIMULATOR



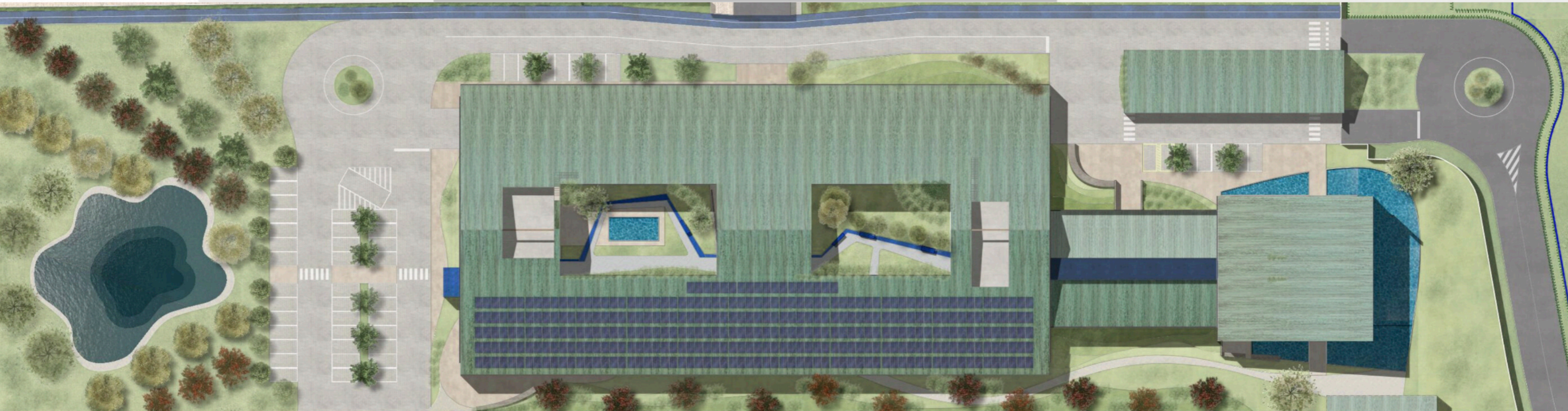
REAL SETUP



Create the perfect solution for your project with our technicians.  
Email us at: [info@genesi-lux.it](mailto:info@genesi-lux.it)



ZERO ENVIRONMENTAL  
IMPACT







# GENESI'S NEW HEADQUARTER

for a sustainable future is being built and completed by 2027



Via Vignolese, 2605  
41057 Spilamberto (MO)



Organization with an  
 ISO 9001:2015 certified  
 Quality Management System  
[www.genesi-elettronica.com](http://www.genesi-elettronica.com)  
 Follow us on:    



Genesi Elettronica Srl  
 via Bachelet 3/A - 41057  
 Spilamberto - (Modena) - Italy  
 E-mail: [info@genesi-lux.it](mailto:info@genesi-lux.it)  
 Tel. +39 059785566

DACH Market Representative  
 thl-tec services  
 Backnang - Germany  
 E-mail: [info@thl-tec.de](mailto:info@thl-tec.de)  
 Tel. +49 (0)71917358650